

Product datasheet for **SM321F**

T Cell Receptor (TCR) alpha/beta Mouse Monoclonal Antibody [Clone ID: R73]

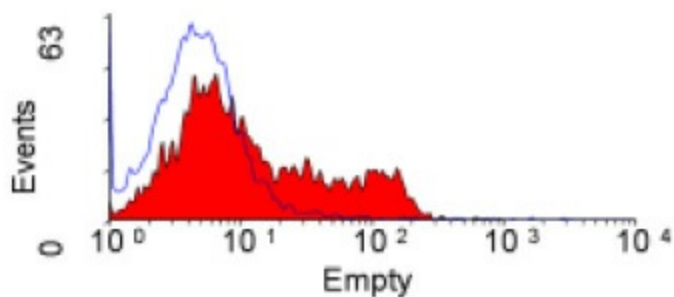
Product data:

Product Type:	Primary Antibodies
Clone Name:	R73
Applications:	FC
Recommended Dilution:	Flow Cytometry.
Reactivity:	Monkey, Rat
Host:	Mouse
Isotype:	IgG1
Clonality:	Monoclonal
Immunogen:	Rat T Blasts and Erythrocytes. Spleen cells from immunised BALB/c mice were fused with cells of the X63.Ag8.653 mouse myeloma cell line.
Specificity:	This antibody detects a T cell specific molecule consisting of two disulphide-linked subunits of 40 and 46 kD molecular weight, respectively, on 97% of peripheral rat T cells as defined by the OX-52 marker. R7.3 is mitogenic for unseparated spleen cells and for purified T cells. In the rat thymus, mature medullary cells express the R7.3 determinant at the same level as peripheral T cells, whereas 94% of CD4- CD8- thymocytes are R7.3 negative. It is most likely directed at a constant determinant of the rat alpha/beta heterodimeric T cell antigen receptor.
Formulation:	PBS, pH 7.2 containing 0.09% Sodium Azide and 1% Bovine Serum Albumin Label: FITC State: Liquid purified IgG Label: Fluorescein Isothiocyanate Isomer 1
Concentration:	lot specific
Purification:	Ion exchange chromatography
Conjugation:	FITC
Storage:	Store the antibody undiluted at 2-8°C for one month or (in aliquots) at -20°C for longer. Avoid repeated freezing and thawing. This product is photosensitive and should be protected from light.
Stability:	Shelf life: one year from despatch.


[View online »](#)

Synonyms: TCRA, TCRB, T-Cell Receptor alpha, T-Cell Receptor beta, T-Cell Receptor alpha beta

Product images:



SM321F staining of rat splenocytes.