

## Product datasheet for **SM3160P**

### MAP2 Mouse Monoclonal Antibody [Clone ID: MT-08]

#### Product data:

Product Type:	Primary Antibodies
Clone Name:	MT-08
Applications:	ELISA, IF, IHC, IP, WB
Recommended Dilution:	<b>Immunohistochemistry on Frozen Sections</b> (use mouse brain as positive tissue). <b>Immunohistochemistry on Paraffin Sections:</b> <i>Recommended Dilution:</i> 10 µg/ml. <i>Positive tissue:</i> brain. <b>Immunocytochemistry</b> (use Human neuroblastoma SH-SY5Y as positive control). <b>Western blot</b> (use Porcine brain or MAP2 as positive control). <b>Immunoprecipitation</b> (use Porcine brain as positive material). <b>ELISA</b> (use Porcine brain or MAP2 as positive control).
Reactivity:	Human, Porcine, Mouse
Host:	Mouse
Isotype:	IgG1
Clonality:	Monoclonal
Immunogen:	Microtubule protein (bovine brain) enriched for kinesin
Specificity:	The antibody recognizes an epitope (aa 1375-1395) located in central domain of molecule Microtubule Associated Protein 2ab (MAP2ab).
Formulation:	PBS with 15 mM Sodium Azide, approx. pH 7.4 State: Purified State: Liquid purified Ig fraction (Purity > 95% by SDS-PAGE)
Concentration:	lot specific
Purification:	Protein A Chromatography
Conjugation:	Unconjugated
Storage:	Store the antibody undiluted at 2-8°C for one month or (in aliquots) at -20°C for longer. Avoid repeated freezing and thawing.
Stability:	Shelf life: one year from despatch.
Gene Name:	microtubule associated protein 2



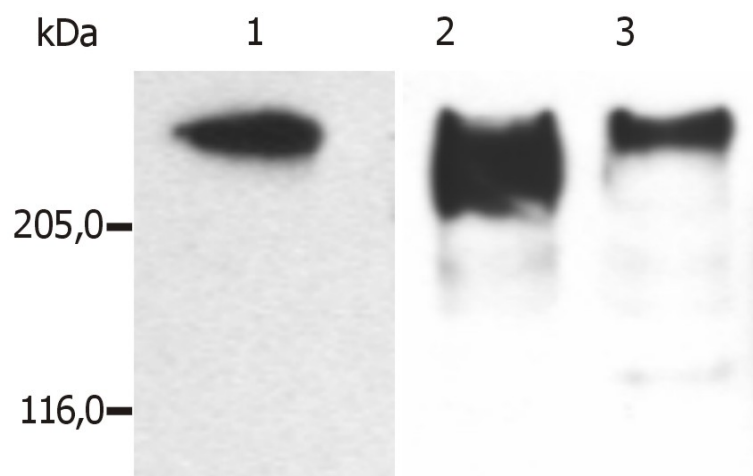
[View online »](#)

Database Link: [Entrez Gene 4133 Human P11137](#)

Background: MAP2a and 2b (270 kDa) being found mostly in dendrites, stabilize microtubules (shift the reaction kinetics in addition of new subunits and microtubule growth) and participate in determining the structure of different parts of vertebrate nerve cells.

Synonyms: Microtubule-associated protein 2, MAP2, Neuronal Marker

### Product images:



Western Blotting analysis (reducing conditions) of microtubules partially purified from porcine brain lysate. Lane 1: immunostaining with anti-MAP2ab (MT-01) Lane 2: immunostaining with anti-MAP2ab (MT-07) Lane 3: immunostaining with anti-MAP2ab (MT-08)