

Product datasheet for **SM3156P**

Transferrin Mouse Monoclonal Antibody [Clone ID: PTF-02]

Product data:

Product Type:	Primary Antibodies
Clone Name:	PTF-02
Applications:	ELISA, WB
Recommended Dilution:	ELISA. Western blot.
Reactivity:	Porcine
Host:	Mouse
Isotype:	IgG1
Clonality:	Monoclonal
Specificity:	The antibody PTF-02 recognizes porcine serum transferrin, a 77 kDa single polypeptide chain glycoprotein which is synthesised in the liver and consists of two domains each having a high affinity reversible binding site for Fe ³⁺ . The antibody is negative with Sheep and Horse. Other species not tested.
Formulation:	Phosphate buffered saline (PBS) with 15 mM sodium azide, approx. pH 7.4 State: Purified State: Liquid Ig fraction
Concentration:	lot specific
Purification:	Protein-A affinity chromatography; purity > 95% (by SDS-PAGE)
Conjugation:	Unconjugated
Storage:	Store the antibody at 2 - 8 °C up to one month or (in aliquots) at -20 °C for longer. Avoid repeated freezing and thawing.
Stability:	Shelf life: one year from despatch.
Database Link:	P09571



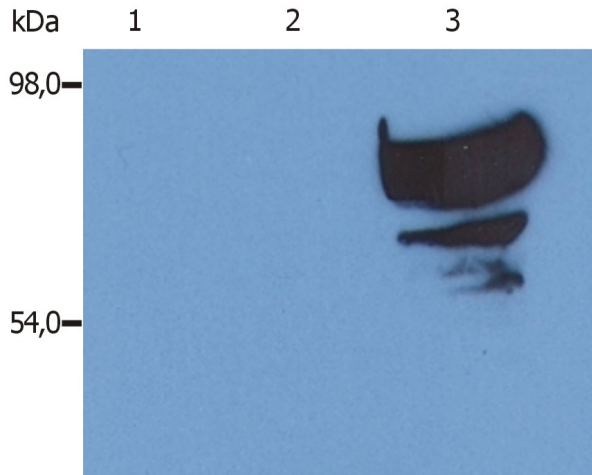
[View online »](#)

Background:

Transferrin is a single polypeptide chain glycoprotein belonging to iron binding family of proteins. It has a molecular weight of 81,5 kDa (porcine). It is synthesised in the liver and consists of two domains each having a high affinity reversible binding site for Fe³⁺. The iron is transported in blood and interstitial fluids to sites of use and disposal. Iron/transferrin is essential in haemoglobin synthesis and for certain types of cell division. Serum concentration rises in iron deficiency and pregnancy and falls in iron overload, infection and inflammatory conditions.

Synonyms:

Serotransferrin, Siderophilin

Product images:

Western Blotting analysis (reducing conditions) of Transferrin of various species using anti-porcine Transferrin (PTF-02). Lane 1: equine transferrin Lane 2: sheep transferrin Lane 3: porcine transferrin