

## Product datasheet for **SM3154P**

### CD45 (PTPRC) (CD45RB) Mouse Monoclonal Antibody [Clone ID: MEM-143]

#### Product data:

Product Type:	Primary Antibodies
Clone Name:	MEM-143
Applications:	FC, IHC, WB
Recommended Dilution:	<b>Flow cytometry:</b> Recommended dilution: 0.5-4 µg/ml. The staining pattern of the MEM-143 shows prominent differences from other anti-CD45RB reagents including standard antibody MEM-55, mostly as a result of the recognition of differences in glycosylation. <b>Immunohistochemistry (paraffin sections):</b> Recommended dilution: 10 µg/ml; positive control: human tonsil. <b>Western blotting:</b> Recommended dilution: 1-2 µg/ml.
Reactivity:	Human
Host:	Mouse
Isotype:	IgG1
Clonality:	Monoclonal
Immunogen:	Human peripheral blood lymphocytes
Specificity:	The antibody reacts with a protein determinant of CD45RB, a 180-240 kDa single chain type I membrane glycoprotein, variant of CD45 (CD45RB isoform). CD45RB is expressed on a subset of T lymphocytes, B lymphocytes, monocytes, macrophages, granulocytes and dendritic cells. The MEM-143 clone is therefore not neuraminidase sensitive like most other anti-CD45RB antibodies. The reactivity of the antibody MEM-143 clone can be blocked by a peptide including amino acids 79-88.
Formulation:	Phosphate buffered saline (PBS) with 15 mM sodium azide, approx. pH 7.4 State: Purified State: Liquid Ig fraction
Concentration:	lot specific
Purification:	Protein-A affinity chromatography; purity: > 95% (by SDS-PAGE)
Conjugation:	Unconjugated
Storage:	Store the antibody at 2 - 8 °C up to one month or (in aliquots) at -20 °C for longer. Avoid repeated freezing and thawing.
Stability:	Shelf life: one year from despatch.



[View online »](#)

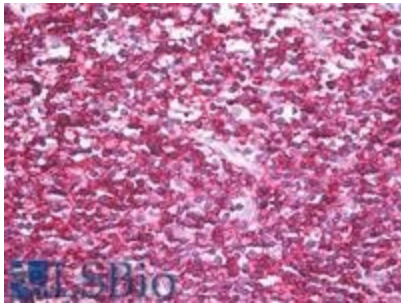
**Gene Name:** protein tyrosine phosphatase, receptor type C

**Database Link:** [Entrez Gene 5788 Human P08575](#)

**Background:** CD45RB is an of a receptor-type protein tyrosine phosphatase, CD45 glycoprotein. CD45 is crucial in lymphocyte development and antigen signaling, serving as an important regulator of Src-family kinases, promotes cell survival by modulating integrin-mediated signal transduction pathway and is also involved in DNA fragmentation during apoptosis. CD45 isoforms differ in their extracellular domains, whereas they share identical transmembrane and cytoplasmic domains. These isoforms differ in their ability to translocate into the glycosphingolipid-enriched membrane domains and their expression depends on cell type and physiological state of the cell. CD45RB is expressed e.g. in microglia and inflammatory cells.

**Synonyms:** PTPRC, Leukocyte common antigen, L-CA, T200

**Product images:**



Immunohistochemistry staining of human tonsil (paraffin sections) using anti-CD45RB (clone MEM-143).