

Product datasheet for **SM3150P**

beta 2 Microglobulin (B2M) Mouse Monoclonal Antibody [Clone ID: B2M-02]

Product data:

Product Type:	Primary Antibodies
Clone Name:	B2M-02
Applications:	ELISA, FC, IHC, WB
Recommended Dilution:	Immunohistochemistry (paraffin sections): Heat-mediated antigen retrieval; recommended dilution: 5 µg/ml; positive tissue: liver. Western blotting: Recommended dilution: 2 µg/ml; non-reducing conditions preferred. Flow cytometry: Recommended dilution: 1 µg/ml; positive control: PBL cell line, negative control: DAUDI human lymphoma cell line, erythrocytes. ELISA: Working dilution should be determined by investigator.
Reactivity:	Human, Porcine
Host:	Mouse
Isotype:	IgG1
Clonality:	Monoclonal
Immunogen:	Purified isolated human beta2-microglobulin
Specificity:	The antibody B2M-02 reacts with beta2-microglobulin (b2M) associated with cell-surface MHC Class I molecules and other membrane antigens as well as with soluble beta2-microglobulin.
Formulation:	PBS with 15 mM sodium azide, approx. pH 7.4 State: Purified State: Liquid purified Ig fraction (> 95% pure by SDS-PAGE)
Concentration:	lot specific
Purification:	Protein A chromatography
Conjugation:	Unconjugated
Storage:	Store the antibody undiluted at 2-8°C for one month or (in aliquots) at -20°C for longer. Avoid repeated freezing and thawing.
Stability:	Shelf life: one year from despatch.
Gene Name:	beta-2-microglobulin



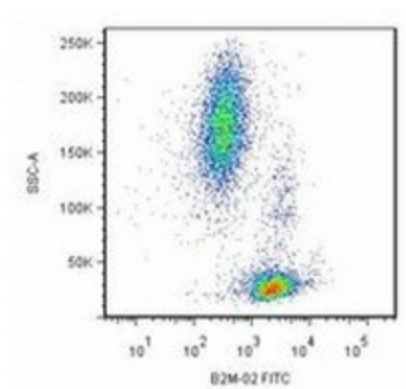
[View online »](#)

Database Link: [Entrez Gene 567 Human P61769](#)

Background: B2M is a 12 kDa Ig like glycoprotein. B2M non-covalently associates with the 44 kDa alpha chain to form the HLA Class I antigen complex. Human beta2-microglobulin associated with HLA Class I antigens is expressed on many types of cells including lymphocytes, thymocytes, monocytes, granulocytes, platelets, endothelial cells, and epithelial cells. It is absent on erythrocytes.

Synonyms: B2M, Beta-2 microglobulin, Beta 2 microglobulin

Product images:



Surface staining of human peripheral blood cells by mouse monoclonal anti-beta2-microglobulin antibody B2M-02.