

Product datasheet for **SM3150B**

beta 2 Microglobulin (B2M) Mouse Monoclonal Antibody [Clone ID: B2M-02]

Product data:

Product Type:	Primary Antibodies
Clone Name:	B2M-02
Applications:	FC
Recommended Dilution:	Suitable for Flow cytometry (1/200 starting point).
Reactivity:	Human, Porcine
Host:	Mouse
Isotype:	IgG1
Clonality:	Monoclonal
Immunogen:	Purified isolated human beta2-microglobulin
Specificity:	The antibody B2M-02 reacts with beta2-microglobulin (b2M) associated with cell-surface MHC Class I molecules and other membrane antigens as well as with soluble beta2-microglobulin. b2M is a 12 kDa Ig like glycoprotein expressed on lymphocytes, thymocytes, monocytes, granulocytes, platelets, endothelial cells and epithelial cells. It is absent on erythrocytes.
Formulation:	Phosphate buffered saline (PBS) with 15 mM sodium azide, approx. pH 7.4 Label: Biotin State: Liquid purified Ig fraction Label: Conjugated with -LC-NHS under optimum conditions. The reagent is free of unconjugated biotin
Concentration:	lot specific
Conjugation:	Biotin
Storage:	Store the antibody undiluted at 2 - 8 °C. DO NOT FREEZE!
Stability:	Shelf life: one year from despatch.
Gene Name:	beta-2-microglobulin
Database Link:	Entrez Gene 567 Human P61769



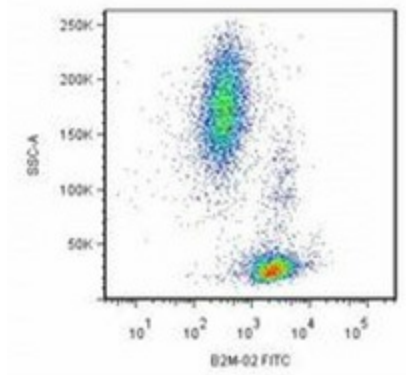
[View online »](#)

Background:

b2M non-covalently associates with the 44 kDa alpha chain to form the HLA Class I antigen complex. Human beta2-microglobulin associated with HLA Class I antigens is expressed on many types of cells including lymphocytes, thymocytes, monocytes, granulocytes, platelets, endothelial cells, and epithelial cells. It is absent on erythrocytes.

Synonyms:

B2M, Beta-2 microglobulin, Beta 2 microglobulin

Product images:

Surface staining of human peripheral blood cells by mouse monoclonal anti-beta2-microglobulin antibody B2M-02.