

## Product datasheet for **SM3141F**

### Glycophorin A (GYPA) (N-term) Mouse Monoclonal Antibody [Clone ID: HIR2]

#### Product data:

Product Type:	Primary Antibodies
Clone Name:	HIR2
Applications:	FC
Recommended Dilution:	<b>Flow Cytometry</b> analysis of Human blood cells using 20 µl reagent / 100 µl of whole blood or 10 <sup>6</sup> cells in a suspension.
Reactivity:	Human
Host:	Mouse
Isotype:	IgG2b
Clonality:	Monoclonal
Immunogen:	Synthetic peptide (Human, N-terminal)
Specificity:	The mouse monoclonal antibody HIR2 recognizes an epitope within the N-terminal (extracellular) portion of CD235a (glycophorin A) and CD235b (glycophorin B). Its antigen is expressed on early erythroblasts, late erythroblasts, erythroblasts, mature erythrocytes and the cells of erythroid cell lines K562 and HEL, but not on all other cells.
Formulation:	Phosphate buffered saline (PBS) solution containing 15mM sodium azide Label: FITC State: Liquid purified Ig fraction Label: Conjugated with Fluorescein isothiocyanate (FITC) under optimum conditions. The reagent is free of unconjugated FITC and adjusted for direct use
Conjugation:	FITC
Storage:	Store undiluted at 2-8°C. <b>DO NOT FREEZE!</b> This product is photosensitive and should be protected from light.
Stability:	Shelf life: one year from despatch.
Gene Name:	glycophorin A (MNS blood group)
Database Link:	<a href="#">Entrez Gene 2993 Human P02724</a>



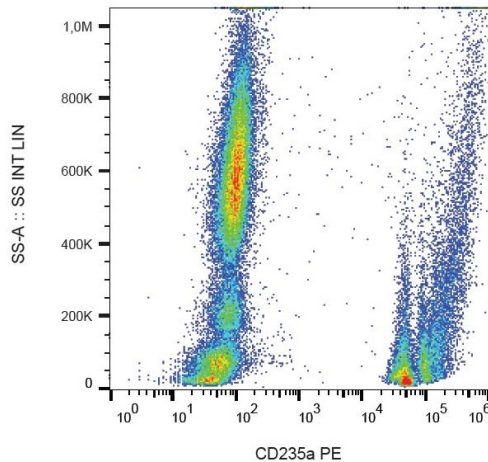
[View online »](#)

**Background:**

CD235a (Glycophorin A, GPA) is a transmembrane sialoglycoprotein expressed on erythrocytes and their precursors. Similarly to glycophorin B (GPB), these molecules provide the cells with a large mucin-like surface, which minimalizes aggregation between erythrocytes in the circulation. GPA is the carrier of blood group M and N specificities, while GPB accounts for S, s and U specificities. CD235a is a receptor of Hsa, an Streptococcus adhesin.

**Synonyms:**

Glycophorin-A, GPA, PAS-2, Sialoglycoprotein alpha, MN sialoglycoprotein

**Product images:**

Surface staining of human peripheral blood with anti-CD235a (HIR2) PE.