

Product datasheet for **SM3139R**

CD10 (MME) Mouse Monoclonal Antibody [Clone ID: LT10]

Product data:

Product Type:	Primary Antibodies
Clone Name:	LT10
Applications:	FC
Recommended Dilution:	Flow Cytometry analysis of human blood cells using 20 µl reagent / 100 µl of whole blood or 10e6 cells in a suspension. The content of a vial (2 ml) is sufficient for 100 tests.
Reactivity:	Human
Host:	Mouse
Isotype:	IgG1
Clonality:	Monoclonal
Immunogen:	Mouse NALM-6 leukemia pre-B cell line (tissue/cell preparation)
Specificity:	This antibody reacts with CD10 antigen (CALLA - Common acute lymphatic leukemia antigen), a 100 kDa type II integral membrane protein.
Formulation:	Phosphate buffered saline (PBS) containing 15 mM sodium azide and 0.2% (w/v) high-grade protease free Bovine Serum Albumin (BSA) as a stabilizing agent. Label: PE State: Liquid purified Ig fraction Label: Conjugated with R-Phycoerythrin under optimum conditions. The conjugate is purified by size-exclusion chromatography and adjusted for direct use
Conjugation:	PE
Storage:	Store the antibody at 2 - 8 °C. DO NOT FREEZE! This product is photosensitive and should be protected from light.
Stability:	Shelf life: one year from despatch.
Gene Name:	membrane metallo-endopeptidase
Database Link:	Entrez Gene 4311 Human P08473



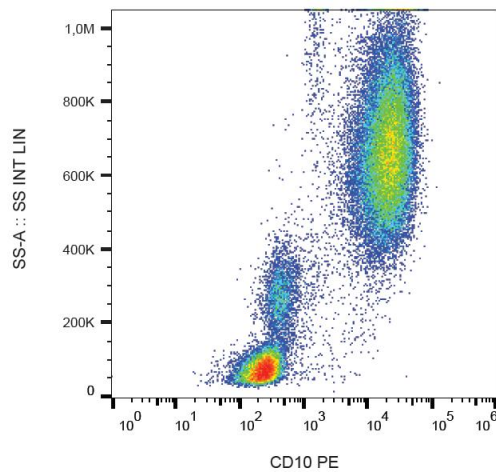
[View online »](#)

Background:

CD10 (neutral endopeptidase - NEP, common acute lymphocytic leukemia antigen - CALLA, membrane metallo-endopeptidase - MME, enkefalinase) is a 100-kDa cell surface zinc metalloprotease cleaving peptide bonds on the N-terminus of hydrophobic amino acids and inactivating multiple physiologically active peptides. CD10 is expressed on various normal cell types, including lymphoid precursor cells, germinal center B lymphocytes, and some epithelial cells, and its expression level serves as a marker for diagnostics of many carcinomas. CD10 is also a differentiation antigen for early B-lymphoid progenitors in the B-cell differentiation pathway and has a key role in regulation of growth, differentiation and signal transduction of many cellular systems.

Synonyms:

MME, EPN, Neutral endopeptidase 24.11, Neutral endopeptidase, NEP, Enkephalinase, Atriopeptidase, CALLA

Product images:

Surface staining of human peripheral blood cells with anti-CD10 (LT10) PE.