

Product datasheet for **SM3139P**

CD10 (MME) Mouse Monoclonal Antibody [Clone ID: LT10]

Product data:

| | |
|-----------------------|---|
| Product Type: | Primary Antibodies |
| Clone Name: | LT10 |
| Applications: | FC |
| Recommended Dilution: | Flow Cytometry. |
| Reactivity: | Human |
| Host: | Mouse |
| Isotype: | IgG1 |
| Clonality: | Monoclonal |
| Immunogen: | Mouse NALM-6 leukemia pre-B cell line (tissue/cell preparation) |
| Specificity: | The antibody LT10 reacts with CD10 antigen (CALLA - Common acute lymphatic leukemia antigen), a 100 kDa type II integral membrane protein. |
| Formulation: | Phosphate buffered saline (PBS) with 15 mM sodium azide, approx. pH 7.4 State: Purified State: Liquid Ig fraction |
| Concentration: | lot specific |
| Purification: | Precipitation methods and ion exchange chromatography; Purity: > 95% (by SDS-PAGE) |
| Conjugation: | Unconjugated |
| Storage: | Store the antibody undiluted at 4-8°C for one month or at -20°C for longer. Avoid repeated freezing and thawing. Should this product contain a precipitate we recommend microcentrifugation before use. |
| Stability: | Shelf life: one year from despatch. |
| Gene Name: | membrane metallo-endopeptidase |
| Database Link: | Entrez Gene 4311 Human P08473 |



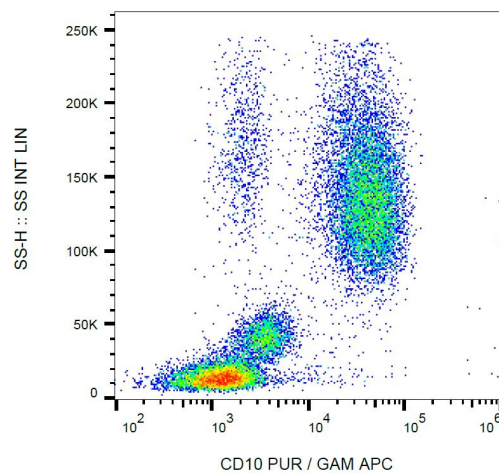
[View online »](#)

Background:

CD10 (neutral endopeptidase NEP, common acute lymphocytic leukemia antigen CALLA, membrane metallo-endopeptidase MME, enkephalinase) is a 100-kDa cell surface zinc metalloprotease cleaving peptide bonds on the N-terminus of hydrophobic amino acids and inactivating multiple physiologically active peptids. CD10 is expressed on various normal cell types, including lymphoid precursor cells, germinal center B lymphocytes, and some epithelial cells, and its expression level serves as a marker for diagnostics of many carcinomas. CD10 is also a differentiation antigen for early B-lymphoid progenitors in the B-cell differentiation pathway and has a key role in regulation of growth, differentiation and signal transduction of many cellular systems.

Synonyms:

MME, EPN, Neutral endopeptidase 24.11, Neutral endopeptidase, NEP, Enkephalinase, Atriopeptidase, CALLA

Product images:

Surface staining of human peripheral blood cells with anti-CD10 (LT10) purified; GAM-APC.