

## Product datasheet for **SM3138P**

### CSK Mouse Monoclonal Antibody [Clone ID: CSK-04]

#### Product data:

Product Type:	Primary Antibodies
Clone Name:	CSK-04
Applications:	IF, IP, WB
Recommended Dilution:	Immunoprecipitation. Western Blotting (1:250-1:300. Weak non-specific band of cca 60 kDa is detected in human cell lines in lower antibody dilutions). Immunocytochemistry (Positive control: HeLa human cervix carcinoma cell line).
Reactivity:	Human, Mouse
Host:	Mouse
Isotype:	IgG1
Clonality:	Monoclonal
Immunogen:	Bacterially expressed recombinant fragment of human Csk corresponding to aa 330-450.
Specificity:	The antibody CSK-04 reacts with Csk (C-terminal Src kinase), a 50 kDa non-receptor protein tyrosine kinase expressed in cytosol.
Formulation:	Phosphate buffered saline (PBS) with 15 mM sodium azide, approx. pH 7.4 State: Purified State: Liquid Ig fraction
Purification:	Protein A affinity chromatography; purity: > 95% (by SDS-PAGE)
Conjugation:	Unconjugated
Storage:	Store the antibody at 2 - 8 °C up to one month or (in aliquots) at -20 °C for longer. Avoid repeated freezing and thawing.
Stability:	Shelf life: one year from despatch.
Gene Name:	c-src tyrosine kinase
Database Link:	<a href="#">Entrez Gene 1445 Human P41240</a>



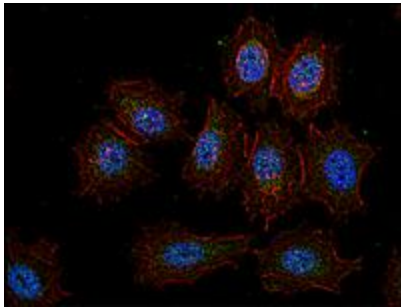
[View online »](#)

**Background:**

C-terminal Src kinase (Csk) is a non-receptor protein tyrosine kinase which resembles Src-family kinases, but unlike them lacks the conserved autophosphorylation site, the regulatory C-terminal tyrosine as well as myristylation and palmitylation. Csk negatively regulates Src-family kinases by phosphorylation of their C-terminal regulatory tyrosine. Disruption of the *csk* gene causes constitutive activation of Src-family kinases, and overexpression of Csk usually counteracts their signaling. The Csk-mediated regulation of those Src-family kinases that are localized in lipid rafts is enabled by a ubiquitously expressed transmembrane adaptor PAG (also known as Cbp, Csk-binding protein), which recruits Csk.

**Synonyms:**

Tyrosine-protein kinase CSK, C-SRC kinase, Protein-tyrosine kinase CYL

**Product images:**

Immunofluorescence staining of Csk in human HeLa cell line using anti-Csk (CSK-04; green). Actin cytoskeleton was decorated by phalloidin (red) and cell nuclei stained with DAPI (blue).