

Product datasheet for **SM3136P**

LIME (LIME1) Mouse Monoclonal Antibody [Clone ID: LIME10]

Product data:

Product Type:	Primary Antibodies
Clone Name:	LIME10
Applications:	FC, IHC, WB
Recommended Dilution:	Immunohistochemistry (paraffin sections): Recommended dilution: 10 µg/ml. Western blotting: Reducing conditions; recommended dilution: 1 µg/ml. Flow cytometry: Recommended dilution: 1-5 µg/ml.
Reactivity:	Human
Host:	Mouse
Isotype:	IgG2a
Clonality:	Monoclonal
Immunogen:	COOH-terminal peptide comprising residues 281-296 of the human LIME conjugated to keyhole limpet hemocyanin
Specificity:	The antibody reacts with the cytoplasmic domain of LIME, a 31 kDa Lck-interacting transmembrane adaptor expressed by T cells.
Formulation:	Phosphate buffered saline (PBS) with 15 mM sodium azide, approx. pH 7.4 State: Purified State: Liquid Ig fraction
Concentration:	lot specific
Purification:	Protein A affinity chromatography; purity: > 95% (by SDS-PAGE)
Conjugation:	Unconjugated
Storage:	Store the antibody at 2 - 8 °C up to one month or (in aliquots) at -20 °C for longer. Avoid repeated freezing and thawing.
Stability:	Shelf life: one year from despatch.
Gene Name:	Lck interacting transmembrane adaptor 1
Database Link:	Entrez Gene 54923 Human Q9H400



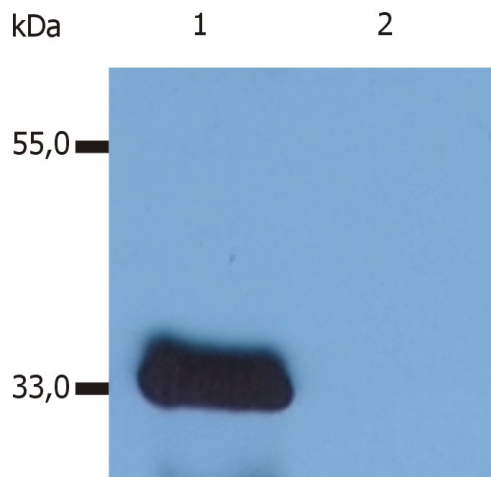
[View online »](#)

Background:

LIME (Lck-interacting molecule) is a 31 kDa double-palmitoylated protein with unusually basic cytoplasmic domain, expressed by T cells. After ligation of CD4 or CD8 T cell coreceptors, LIME is phosphorylated by Src-family kinases and associates with Lck and Fyn kinases and with their negative regulator Csk. Interestingly, Csk-mediated phosphorylation of C-terminal negative-regulatory tyrosine of LIME-associated Lck can result in increase of enzymatic activity compared with the total pool of Lck, thus, LIME serves as a positive regulator of TCR-dependent T cell signaling. However, under some circumstances, LIME may mediate inhibitory signals.

Synonyms:

LIME1, LIME, LIME-1, Lck-interacting membrane protein, Lck-interacting molecule, Lck-interacting transmembrane adapter 1

Product images:

Western Blotting analysis (reducing conditions) of human LIME using anti-human LIME (LIME-10). Lane 1: J77 cell line transfected with LIME Lane 2: non-transfected J77 cell line (cells are essentially devoid of endogenous LIME expression)