

## Product datasheet for **SM3135P**

### SLP76 (LCP2) Mouse Monoclonal Antibody [Clone ID: SLP-76/03]

#### Product data:

Product Type:	Primary Antibodies
Clone Name:	SLP-76/03
Applications:	IHC, WB
Recommended Dilution:	Western Blot. Immunohistochemistry (paraffin sections): Recommended dilution: 10 µg/ml, Positive tissue: thymus.
Reactivity:	Human, Porcine, Mouse
Host:	Mouse
Isotype:	IgG2b
Clonality:	Monoclonal
Immunogen:	A fusion protein representing amino acids 216-434 of human SLP-76
Specificity:	The antibody reacts with SLP76, a 76 kDa cytosolic adaptor protein that is involved in signaling of various hematopoietic cells, such as T cells, mast cells or neutrophils; in B cells, however, it is replaced by SLP65.
Formulation:	Phosphate buffered saline (PBS) with 15 mM sodium azide, approx. pH 7.4 State: Purified State: Liquid Ig fraction
Concentration:	lot specific
Purification:	Purified by protein-A affinity chromatography.
Conjugation:	Unconjugated
Storage:	Store the antibody at 2 - 8 °C up to one month or (in aliquots) at -20 °C for longer. Avoid repeated freezing and thawing.
Stability:	Shelf life: one year from despatch.
Gene Name:	lymphocyte cytosolic protein 2
Database Link:	<a href="#">Entrez Gene 3937 Human Q13094</a>



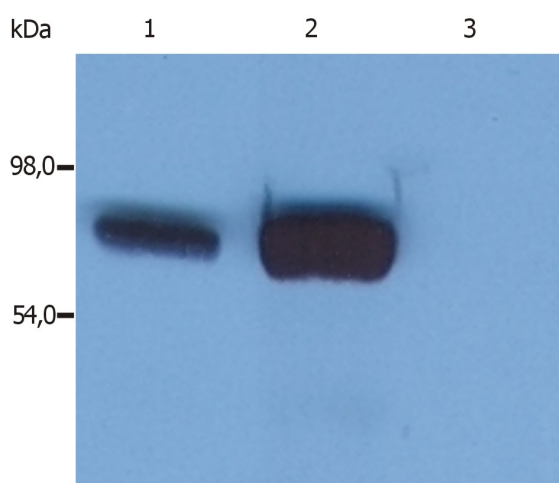
[View online »](#)

**Background:**

SLP76 (SH2 domain-containing leukocyte protein of 76 kDa) is a cytosolic adaptor protein which translocates to the plasma membrane and is involved in multiple signaling pathways in T cells, mast cells, neutrophils and platelets; B cells express its analog SLP65/BLNK (B cell linker protein). SLP76 is phosphorylated by Syk-family and Tec-family tyrosine kinases and couples them to the phosphorylation and activation of PLC-g. Via Gads or Grb2, SLP76 also associates with LAT adaptor by involvement of SLP76 proline-rich region. The SH2 domain of SLP76 has been identified as the region involved in binding the serine/threonine kinase HPK1. HPK1 may act as both a positive and a negative regulator by promoting the Jnk-mitogen activated protein kinase (MAPK) pathway and inhibiting the pathway leading to AP-1 activation.

**Synonyms:**

LCP2, Lymphocyte cytosolic protein 2, SLP-76 tyrosine phosphoprotein, SLP76

**Product images:**


Western Blotting analysis (reducing conditions) of whole cell lysate using anti-SLP76 (SLP-76/03). Lane 1: HPB-ALL human peripheral blood T cell leukemia cell line; Lane 2: JURKAT human peripheral blood T cell leukemia cell line; Lane 3: RAMOS human Burkitt lymphoma cell line