

Product datasheet for **SM3125P**

STAT1 Mouse Monoclonal Antibody [Clone ID: SM1]

Product data:

Product Type:	Primary Antibodies
Clone Name:	SM1
Applications:	IHC, IP, WB
Recommended Dilution:	Immunoprecipitation. Western Blot: Recommended dilution 1-2 µg/ml. Immunohistochemistry (Paraffin Sections): (5 µg/ml). Positive tissue: lung macrophages.
Reactivity:	Human, Mouse
Host:	Mouse
Isotype:	IgG2b
Clonality:	Monoclonal
Immunogen:	STAT1 peptide sequence 721-733.
Specificity:	The antibody SM1 recognizes an epitope included within amino acids 721-733 of STAT1 (signal transducer and activator of transcription 1).
Formulation:	PBS, pH~7.4 containing 15 mM Sodium Azide as preservative. State: Purified State: Liquid purified IgG fraction (> 95% pure by SDS-PAGE).
Concentration:	lot specific
Purification:	Affinity Chromatography on Protein A
Conjugation:	Unconjugated
Storage:	Store the antibody undiluted at 2-8°C for one month or (in aliquots) at -20°C for longer. Avoid repeated freezing and thawing.
Stability:	Shelf life: one year from despatch.
Gene Name:	signal transducer and activator of transcription 1
Database Link:	Entrez Gene 6772 Human P42224



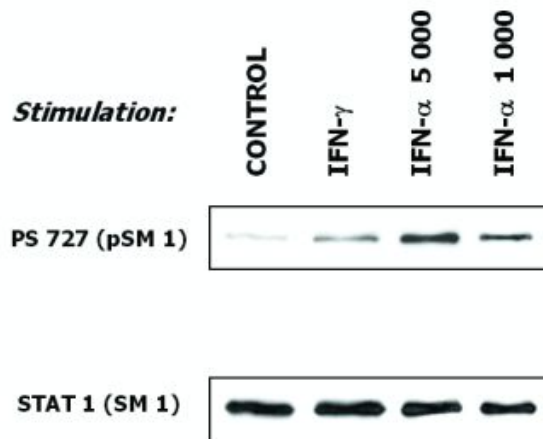
[View online »](#)

Background:

STAT1 belongs to STATs (signal transducers and activators of transcription). After phosphorylation, STAT1 and STAT2 form heterodimers that function as more potent inducers of transcription than the STAT1 homodimer. STAT1 is a 91 kDa protein involved in a variety of systems including antiviral responses and interferon alpha (IFN-alpha) and gamma (IFN-gamma) signal transduction.

Synonyms:

DKFZp686B04100; ISGF-3; OTTHUMP00000205845; STAT91

Product images:

Induction of phosphorylation of STAT1 at Ser727 in human malignant melanoma cells (short-term culture derived from a patient) in response to interferons. Subconfluent cells were serum-starved before exposure to activation dosages of IFN-gamma (10 ng/ml) and IFN-alpha (1000 IU/ml and 5000 IU/ml). Western blotting analysis of cell extracts shows detection of phosphorylated STAT1 (Ser727) by the antibody PSM1 (upper panel) and total STAT1 level by the antibody SM1 (lower panel).