

Product datasheet for **SM3122P**

NTAL (LAT2) Mouse Monoclonal Antibody [Clone ID: NAP-07]

Product data:

Product Type:	Primary Antibodies
Clone Name:	NAP-07
Applications:	FC, IF, IP, WB
Recommended Dilution:	Flow Cytometry: Positive tissue: RAJI Human lymphoma cell line. RAMOS Human lymphoma cell line Immunoprecipitation. Western Blot: 2 µg/ml, incubation 60 min. Positive Control: RAMOS Human lymphoma cell line. Negative Control: HeLa Human cervix carcinoma cell line. Sample preparation: Resuspend approx. 50 mil. cells in 1 ml cold Lysis buffer (1% laurylmaltoside in 20 mM Tris/Cl, 100 mM NaCl pH 8.2, 50 mM NaF including Protease inhibitor Cocktail). Incubate 60 min on ice. Centrifuge to remove cell debris. Mix lysate with non-reducing SDS-PAGE sample buffer. Application note: Non-Reducing conditions. 12% separating SDS-PAGE gel. Immunocytochemistry.
Reactivity:	Human, Mouse
Host:	Mouse
Isotype:	IgG1
Clonality:	Monoclonal
Immunogen:	Recombinant cytoplasmic domain (aa 91-244) of human NTAL
Specificity:	The antibody reacts with Non-T cell activation linker (NTAL), also known as LAB (linker of activated B cells), a 25 - 30 kDa transmembrane adaptor protein present in membrane microdomains (rafts) of B lymphocytes, NK cells and myeloid cells.
Formulation:	Phosphate buffered saline (PBS) with 15 mM Sodium Azide, pH~7.4 State: Purified State: Liquid purified Ig fraction (> 95% pure by SDS-PAGE)
Concentration:	lot specific
Purification:	Affinity Chromatography on Protein A
Conjugation:	Unconjugated



[View online »](#)

Storage: Store undiluted at 2-8°C.
DO NOT FREEZE!

Stability: Shelf life: one year from despatch.

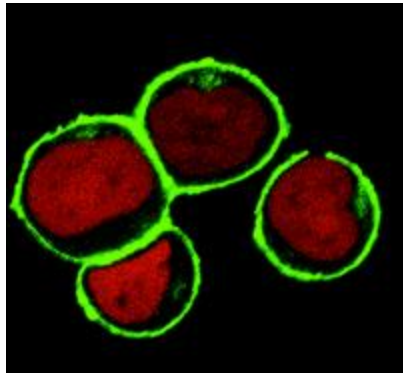
Gene Name: linker for activation of T-cells family member 2

Database Link: [Entrez Gene 7462 Human Q9GZY6](#)

Background: NTAL (Non-T cell activation linker), also known as LAB (Linker for activation of B cells), is a 30 kDa double-palmitoylated transmembrane adaptor protein expressed by B cells, NK cells, mast cells and macrophages. It is a negative regulator of early stages of BCR-dependent B cell signaling and serves as a negative regulator also in mast cells. However, in mast cells, NTAL also contributes to some activation processes, partially overlapping with LAT function.

Synonyms: LAB, NTAL, WBS15, WBSR5, HSPC046

Product images:



Subcellular localization of NTAL by confocal microscopy in THP-1 human acute monocytic leukemia cell line. THP-1 cells were permeabilized and immunostained using anti-NTAL (NAP-07; green). Nuclei are visualized by propidium iodide (red).