

Product datasheet for **SM3120P**

LYN Mouse Monoclonal Antibody [Clone ID: LYN-01]

Product data:

Product Type:	Primary Antibodies
Clone Name:	LYN-01
Applications:	IF, IP, WB
Recommended Dilution:	Immunoprecipitation. Immunocytochemistry. Western Blotting: 1-2 µg/ml for 60 min. Positive Control: RBL Rat basophilic leukemia cell line. JURKAT Human peripheral blood leukemia T-cell line. A-431 Human epidermoid carcinoma cell line. U-937 Human histiocytic lymphoma cell line. Sample Preparation: Resuspend approx. 50 mil. cells in 1 ml cold lysis buffer (1% laurylmaltoside in 20 mM Tris/Cl, 100 mM NaCl pH 8.2, 50 mM NaF including Protease inhibitor Cocktail). Incubate 60 min on ice. Centrifuge to remove cell debris. Mix lysate (1:1) with non-reducing SDS-PAGE sample buffer. Note: Non-reducing conditions. SDS-PAGE (12% separating gel).
Reactivity:	Human, Mouse, Rat
Host:	Mouse
Isotype:	IgG1
Clonality:	Monoclonal
Immunogen:	Bacterially expressed recombinant fragment of human Lyn (aa 8-238)
Specificity:	The antibody reacts with Lyn (p56/p53), a non-receptor Src-family tyrosine kinase expressed in hematopoietic tissues.
Formulation:	PBS, pH~7.4 State: Purified State: Liquid purified Ig fraction (> 95% by SDS-PAGE) Preservative: 15 mM Sodium Azide
Concentration:	lot specific
Purification:	Affinity Chromatography on Protein A

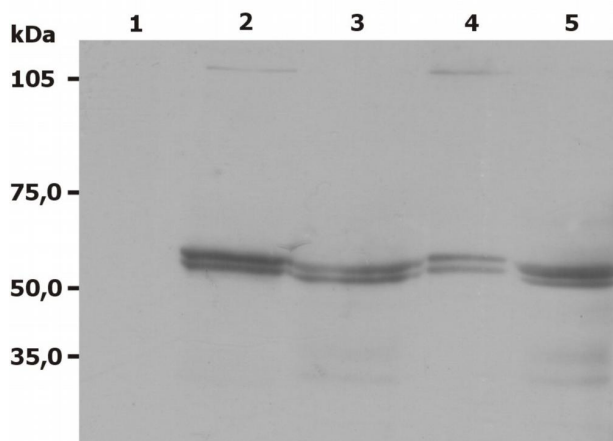


[View online »](#)

Conjugation:	Unconjugated
Storage:	Store undiluted at 2-8°C. DO NOT FREEZE!
Stability:	Shelf life: one year from despatch.
Gene Name:	LYN proto-oncogene, Src family tyrosine kinase
Database Link:	Entrez Gene 4067 Human P07948

Background:	<p>Lyn (also known as p53/56 Lyn) is a membrane associated protein tyrosine kinase (PTK) mostly expressed in hemopoietic cells which is important in cellular signaling. It contains an SH2 and SH3 domain and has been found to be cleaved after activation of caspases in apoptosis. A member of the Src family of PTKs, there are two known isoforms for Lyn which plays an indispensable role in the Fc epsilon RI (Fcer1) and the B cell IgM receptor signaling pathway and is essential for Syk activation and Lat phosphorylation after Fcer1 aggregation and can also phosphorylate Tec on multiple residues. Lyn can also be regulated by IL2 and IL3.</p> <p>Lyn is a member of the src family of non-receptor protein tyrosine kinases that is predominantly expressed in haematopoietic tissues. Like all members of the src family, lyn is thought to participate in signal transduction from cell surface receptors that lack intrinsic tyrosine kinase activity. It is associated with a number of cell surface receptors including the B cell antigen receptor and immunoglobulin E receptor (FceRI).</p>
Synonyms:	Tyrosine-protein kinase Lyn

Product images:



Western Blotting analysis (non-reducing conditions) of Lyn using anti-Lyn (LYN-01). Lane 1: negative control Lane 2: RBL rat basophilic leukemia cell line; Lane 3: JURKAT human peripheral blood T cell leukemia cell line; Lane 4: A-431 human epidermoid carcinoma cell line; Lane 5: U-937 human histiocytic lymphoma cell line