

Product datasheet for **SM3113P**

HLAE (HLA-E) Mouse Monoclonal Antibody [Clone ID: MEM-E/06]

Product data:

Product Type:	Primary Antibodies
Clone Name:	MEM-E/06
Applications:	FC, IHC, IP
Recommended Dilution:	Flow Cytometry. Immunoprecipitation. Immunohistochemistry on paraffin sections: 10 µg/ml; positive tissue: spleen.
Reactivity:	Human, Primate
Host:	Mouse
Isotype:	IgG1
Clonality:	Monoclonal
Immunogen:	Bacterially expressed recombinant HLA-E refolded with beta2-microglobulin and peptide
Specificity:	The antibody recognized native surface-expressed HLA-E, but not denatured heavy chain of HLA-E. The published results showed that the antibody cross-reacts with some classical MHC Class I molecules (HLA-A3, -A11, -B7). However, the recent Workshop I Session on the 3rd International Conference on HLA-G (Paris, July 2003) confirmed that the antibody exhibits much broader cross-reactivity classical MHC Class I antigens, namely with HLA-A24, -A32, -B8, -B15, -B27, -B35, -B44, -B54, -B54, -C3, -C4, -C5, -C7.
Formulation:	Tris buffered saline (TBS) with 15 mM sodium azide, approx. pH 8.0 State: Purified State: Liquid Ig fraction
Concentration:	lot specific
Purification:	Protein-A affinity chromatography; purity: > 95% (by SDS-PAGE)
Conjugation:	Unconjugated
Storage:	Store the antibody at 2 - 8 °C up to one month or (in aliquots) at -20 °C for longer. Avoid repeated freezing and thawing.
Stability:	Shelf life: one year from despatch.
Gene Name:	major histocompatibility complex, class I, E



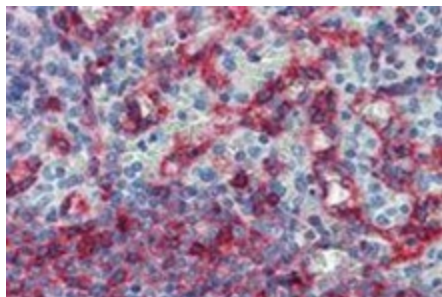
[View online »](#)

Database Link: [Entrez Gene 3133 Human P13747](#)

Background: HLA-E belongs to the MHC Class I molecules (MHC Class Ib; nonclassical) and it is expressed on many types of the human cells.

Synonyms: HLA-6.2, HLAE, MHC class I antigen E

Product images:



Immunohistochemistry staining of human spleen (paraffin sections) with anti-HLA-E (clone MEM-E/06).