

Product datasheet for **SM3112P**

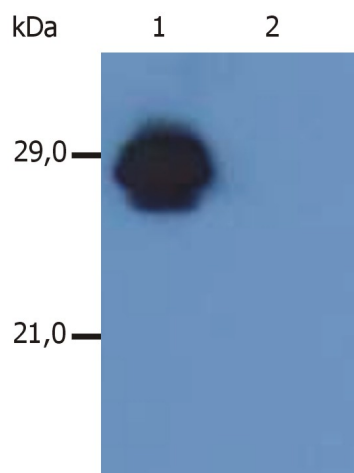
HLA Class II DR + DP Mouse Monoclonal Antibody [Clone ID: MEM-136]

Product data:

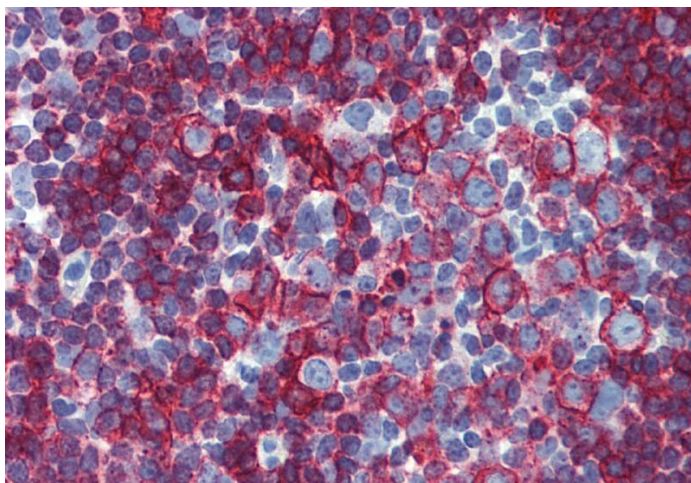
Product Type:	Primary Antibodies
Clone Name:	MEM-136
Applications:	FC, IHC, IP, WB
Recommended Dilution:	Flow cytometry: 0.5 µg/ml. Immunoprecipitation. Western blot (non reducing conditions).
Reactivity:	Human
Host:	Mouse
Isotype:	IgG1
Clonality:	Monoclonal
Immunogen:	PHA-activated peripheral blood lymphocytes
Specificity:	The antibody recognizes common epitope on beta-chain of human HLA-DR and HLA-DP. It reacts with alpha/beta dimer as well as with dissociated beta-subunit.
Formulation:	Phosphate buffered saline (PBS) with 15 mM sodium azide, approx. pH 7.4 State: Purified State: Liquid Ig fraction
Concentration:	lot specific
Purification:	Protein A affinity chromatography; Purity: > 95 % (by SDS-PAGE)
Conjugation:	Unconjugated
Storage:	Store the antibody at 2 - 8 °C up to one month or (in aliquots) at -20 °C for longer. Avoid repeated freezing and thawing.
Stability:	Shelf life: one year from despatch.
Background:	DR and DP are the isotypes of human MHC Class II molecules expressed on antigen-presenting cells (APC; dendritic cells, B lymphocytes, monocytes, macrophages).
Synonyms:	HLA-DP, HLA-DR, HLA class II histocompatibility antigen DR, DP, MHC class II antigen DR, DP



[View online »](#)

Product images:

Western Blotting analysis of MHC Class II in whole cell lysate of RAJI human Burkitt lymphoma cell line using anti-human HLA-DR+DP (MEM-136). The antibody MEM-136 recognizes beta-chain of HLA-DR antigen under non-reducing conditions. Lane 1: immunostaining with anti-human HLA-DR+DP (MEM-136) Lane 2: immunostaining with isotype mouse IgG1 control



Immunohistochemistry staining of human small intestine (paraffin-embedded sections) with anti-HLA-DR+DP (MEM-136).