

Product datasheet for **SM3112F**

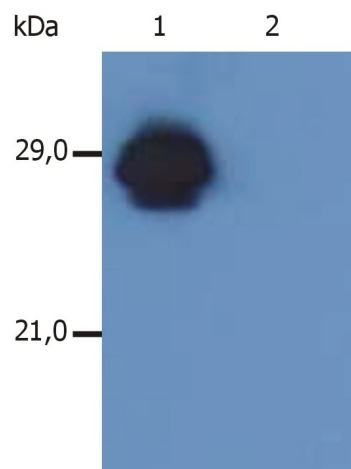
HLA Class II DR + DP Mouse Monoclonal Antibody [Clone ID: MEM-136]

Product data:

Product Type:	Primary Antibodies
Clone Name:	MEM-136
Applications:	FC
Reactivity:	Human
Host:	Mouse
Isotype:	IgG1
Clonality:	Monoclonal
Immunogen:	PHA-activated peripheral blood lymphocytes
Specificity:	This antibody recognizes common epitope on beta-chain of human HLA-DR and HLA-DP. It reacts with alpha/beta dimer as well as with dissociated beta-subunit. DR and DP are the isotypes of human MHC Class II molecules expressed on antigen-presenting cells (APC; dendritic cells, B lymphocytes, monocytes, macrophages).
Formulation:	Phosphate buffered saline (PBS) containing 15 mM sodium azide Label: FITC State: Liquid purified Ig fraction Label: Conjugated with Fluorescein isothiocyanate (FITC) under optimum conditions. The reagent is free of unconjugated FITC and adjusted for direct use.
Conjugation:	FITC
Storage:	Prior to and following reconstitution store the antibody at 2-8°C. DO NOT FREEZE! This product is photosensitive and should be protected from light.
Stability:	Shelf life: one year from despatch.
Synonyms:	HLA-DP, HLA-DR, HLA class II histocompatibility antigen DR, DP, MHC class II antigen DR, DP



[View online »](#)

Product images:

Western Blotting analysis of MHC Class II in whole cell lysate of RAJI human Burkitt lymphoma cell line using anti-human HLA-DR+DP (MEM-136). The antibody MEM-136 recognizes β -chain of HLA-DR antigen under non-reducing conditions. Lane 1: immunostaining with anti-human HLA-DR+DP (MEM-136) Lane 2: immunostaining with Isotype mouse IgG1 control