

## Product datasheet for **SM3112APC**

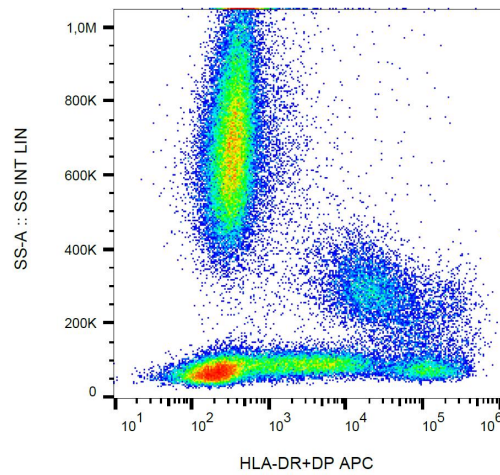
### HLA Class II DR + DP Mouse Monoclonal Antibody [Clone ID: MEM-136]

#### Product data:

Product Type:	Primary Antibodies
Clone Name:	MEM-136
Applications:	FC
Recommended Dilution:	<b>Flow Cytometry:</b> 10 µl reagent / 100 µl of whole blood or 10e6 cells in a suspension. The content of a vial (1 ml) is sufficient for 100 tests.
Reactivity:	Human
Host:	Mouse
Isotype:	IgG1
Clonality:	Monoclonal
Immunogen:	PHA-activated peripheral blood lymphocytes
Specificity:	The antibody MEM-136 recognizes common epitope on beta-chain of Human HLA-DR and HLA-DP. It reacts with alpha/beta dimer as well as with dissociated beta-subunit. DR and DP are the isotypes of Human MHC Class II molecules expressed on antigen-presenting cells (APC, dendritic cells, B lymphocytes, monocytes, macrophages).
Formulation:	Phosphate buffered saline (PBS) solution containing 15mM sodium azide Label: APC State: Liquid purified Ig fraction Label: Conjugated to Allophycocyanin under optimum conditions
Purification:	Size-Exclusion Chromatography
Conjugation:	APC
Storage:	Store the antibody at 2-8°C. <b>DO NOT FREEZE!</b> This product is photosensitive and should be protected from light.
Stability:	Shelf life: one year from despatch.
Background:	DR and DP are the isotypes of human MHC Class II molecules expressed on antigen-presenting cells (APC; dendritic cells, B lymphocytes, monocytes, macrophages).
Synonyms:	HLA-DP, HLA-DR, HLA class II histocompatibility antigen DR, DP, MHC class II antigen DR, DP



[View online »](#)

**Product images:**

Surface staining of human peripheral blood with anti-human HLA-DR+DP (MEM-136) APC.