

Product datasheet for **SM3111P**

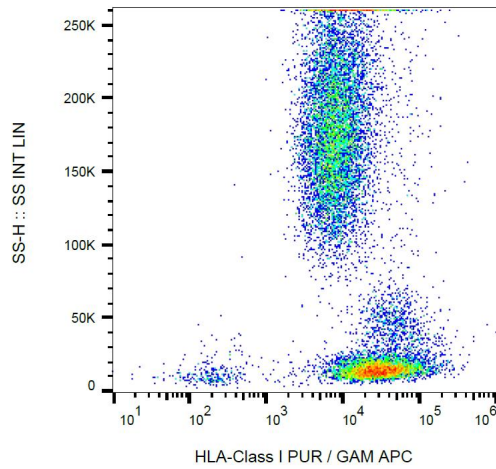
HLA Class I ABC Mouse Monoclonal Antibody [Clone ID: MEM-123]

Product data:

Product Type:	Primary Antibodies
Clone Name:	MEM-123
Applications:	ELISA, FC, IP
Recommended Dilution:	ELISA. Flow Cytometry: 4 µg/ml. Immunoprecipitation.
Reactivity:	Human, Bovine, Monkey
Host:	Mouse
Isotype:	IgG3
Clonality:	Monoclonal
Immunogen:	COS-7 cells (African green monkey).
Specificity:	The antibody reacts with all human classical MHC Class I molecules in native cell-surface forms as well as with human HLA-G cDNA transfected cells. The antibody MEM-123 completely blocks binding of classical W6/32 to surface-expressed HLA-G, but does not cross-blocks the antibody MEM-G/9.
Formulation:	Tris buffered saline (TBS) with 15 mM Sodium Azide as preservative, approx. pH 8.0 State: Purified State: Liquid purified Ig fraction (>95% pure by SDS-PAGE)
Concentration:	lot specific
Purification:	Affinity Chromatography on Protein A
Conjugation:	Unconjugated
Storage:	Store the antibody undiluted at 2-8°C for one month or (in aliquots) at -20°C for longer. Avoid repeated freezing and thawing.
Stability:	Shelf life: one year from despatch.
Background:	MHC Class I molecules (MHC Class Ia) are expressed on the surface of all human cell types.
Synonyms:	MHC class I ABC, HLA Class 2 ABC



[View online »](#)

Product images:

Surface staining of human peripheral blood with anti-HLA-class I (MEM-123) purified, GAM-APC.