

## Product datasheet for **SM3106P**

### **PAG (PAG1) Mouse Monoclonal Antibody [Clone ID: PAG-C1]**

#### **Product data:**

<b>Product Type:</b>	Primary Antibodies
<b>Clone Name:</b>	PAG-C1
<b>Applications:</b>	IHC, IP, WB
<b>Recommended Dilution:</b>	Immunoprecipitation. Positive control: RAJI human Burkitt lymphoma cell line. Immunohistochemistry on paraffin sections: heat-mediated antigen retrieval in citrate buffer pH 6.1. Positive tissue: Appendix (germinal center of lymphatic follicle).
<b>Reactivity:</b>	Human, Mouse, Rat, Bovine
<b>Host:</b>	Mouse
<b>Isotype:</b>	IgG2b
<b>Clonality:</b>	Monoclonal
<b>Immunogen:</b>	C-terminal peptide (last 15 amino acids) of human Csk binding protein coupled to KLH
<b>Specificity:</b>	The antibody recognizes an epitope located in the C-terminal domain of Csk-binding protein (Cbp / PAG), a 46 kDa ubiquitously expressed transmembrane adaptor protein present in membrane rafts (glycosphingolipid-enriched microdomains), which however migrates on SDS PAGE gels anomalously as an 80 kDa molecule.
<b>Formulation:</b>	Phosphate buffered saline (PBS) with 15 mM sodium azide, approx. pH 7.4 State: Purified State: Liquid Ig fraction
<b>Concentration:</b>	lot specific
<b>Purification:</b>	Protein-A affinity chromatography, purity > 95 % (by SDS-PAGE)
<b>Conjugation:</b>	Unconjugated
<b>Storage:</b>	Store the antibody at 2 - 8 °C up to one month or (in aliquots) at -20 °C for longer. Avoid repeated freezing and thawing.
<b>Stability:</b>	Shelf life: one year from despatch.
<b>Gene Name:</b>	phosphoprotein membrane anchor with glycosphingolipid microdomains 1



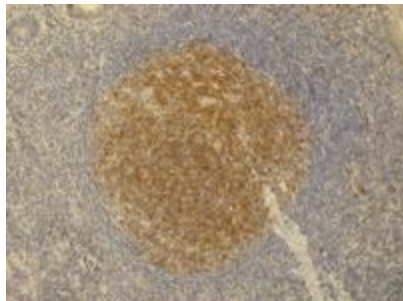
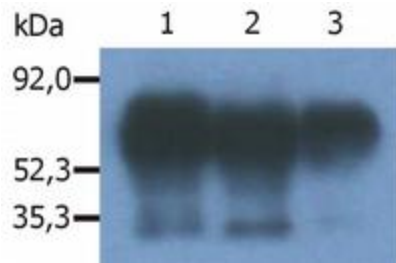
[View online »](#)

Database Link: [Entrez Gene 55824 Human Q9NWO8](#)

**Background:** PAG (phosphoprotein associated with GEMs), also known as Cbp (Csk-binding protein), is a ubiquitously expressed 46 kDa transmembrane adaptor protein present in membrane rafts (glycosphingolipid-enriched microdomains), which however migrates on SDS PAGE gels anomalously as an 80 kDa molecule. Following tyrosine phosphorylation by Src family kinases, PAG binds and thereby activates the protein tyrosine kinase Csk, the major negative regulator of the Src family kinases. Signaling via the B-cell receptor in B cells or high affinity IgE receptor (FcεRI) in mast cells leads to PAG increased tyrosine phosphorylation and Csk binding, while T cell receptor signaling causes PAG dephosphorylation, loss of Csk binding and increased activation of the protein tyrosine kinase Lck.

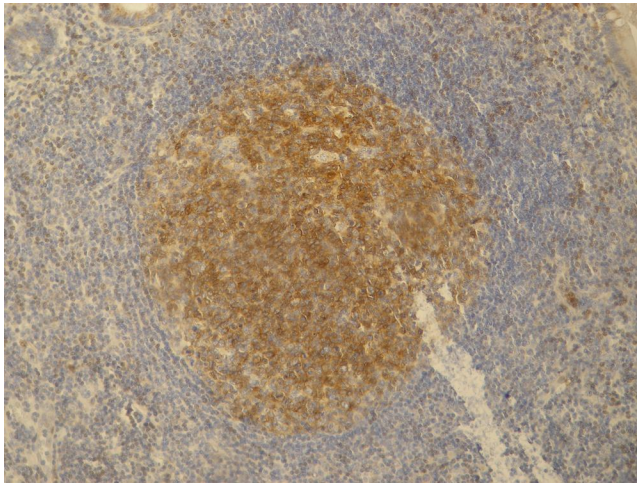
**Synonyms:** PAG, CBP

### Product images:

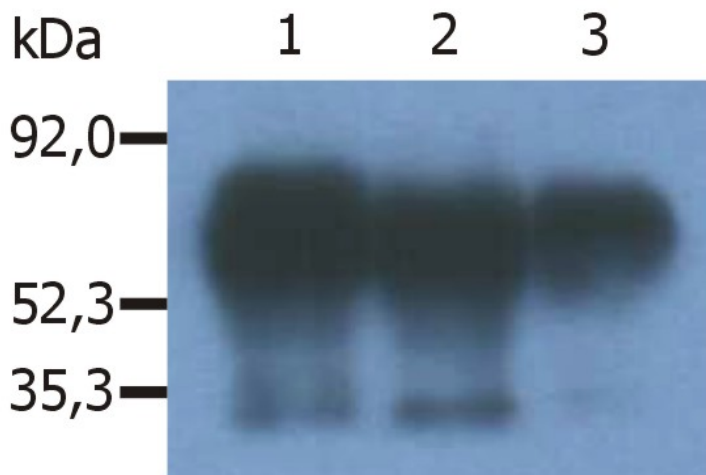


Immunoprecipitation of human Cbp/PAG from the lysate of RAJI human Burkitt lymphoma cell line. Western blot was immunostained with anti-human Cbp/PAG (MEM-255). Note: Csk-binding protein (Cbp/PAG) is a 46 kDa adaptor protein, which however migrates on SDS PAGE gels anomalously as an 80 kDa molecule. Lane 1, 2: immunoprecipitation with anti-Cbp/PAG (PAG-C1). Lane 3: immunoprecipitation with anti-Cbp/PAG (polyclonal antibody; [SP3003P]).

Immunoprecipitation of human PAG/Cbp from the lysate of RAJI human Burkitt lymphoma cell line. Western blot was immunostained with anti-human PAG. Note: PAG/Cbp is a 46 kDa adaptor protein, which however migrates on SDS PAGE gels anomalously as an 80 kDa molecule. Lane 1, 2: immunoprecipitation with anti-PAG (PAG-C1) Lane 3: immunoprecipitation with anti-PAG (polyclonal antibody)



Immunohistochemistry staining (paraffin sections) of PAG/Cbp in germinal center of lymphatic follicle and in dispersed T cells in appendix tissue by monoclonal antibody PAG-C1. Positive signal in T cells.



Immunoprecipitation of human PAG/Cbp from the lysate of RAJI human Burkitt lymphoma cell line. Western blot was immunostained with anti-human PAG (MEM-255). Note: PAG/Cbp is a 46 kDa adaptor protein, which however migrates on SDS PAGE gels anomalously as an 80 kDa molecule. Lane 1, 2: immunoprecipitation with anti-PAG (PAG-C1) Lane 3: immunoprecipitation with anti-PAG