

## Product datasheet for **SM3104B**

### CD71 (TFRC) Mouse Monoclonal Antibody [Clone ID: MEM-75]

#### Product data:

Product Type:	Primary Antibodies
Clone Name:	MEM-75
Applications:	FC, IF
Recommended Dilution:	<b>Indirect Immunofluorescence analysis by Flow Cytometry: 1/200.</b>
Reactivity:	Human
Host:	Mouse
Isotype:	IgG1
Clonality:	Monoclonal
Immunogen:	NALM-6 Human pre-B cell line
Specificity:	The antibody MEM-75 reacts with CD71 antigen (Transferrin Receptor), a 95 kDa type II homodimeric transmembrane glycoprotein expressed on activated B and lymphocytes, macrophages and erythroid precursors; it is lost on resting blood leukocytes. The antibody MEM-75 does not block binding of Transferrin to the receptor.
Formulation:	PBS, pH~7.4 containing 15 mM Sodium Azide as preservative Label: Biotin State: Liquid purified IgG fraction Label: Conjugated with Biotin-LC-NHS under optimum conditions. The reagent is free of unconjugated biotin.
Concentration:	lot specific
Conjugation:	Biotin
Storage:	Store the antibody undiluted at 2 - 8 °C. DO NOT FREEZE!
Stability:	Shelf life: one year from despatch.
Gene Name:	transferrin receptor
Database Link:	<a href="#">Entrez Gene 7037 Human P02786</a>



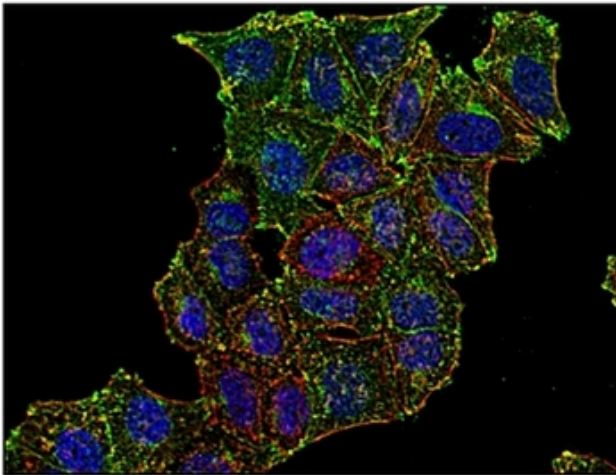
[View online »](#)

**Background:**

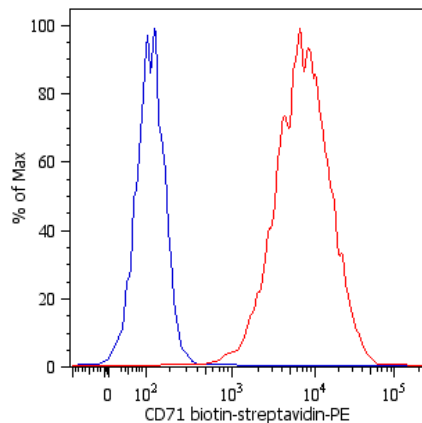
CD71 (transferrin receptor) is a type II transmembrane glycoprotein expressed as homodimer in erythroid blood cell line and in activated leukocytes. Upon binding of holotransferrin (complex of transferrin and iron ions), CD71 is internalized by clathrin-mediated endocytosis. Acidification of endosomes by vesicular membrane proton pumps leads to dissociation of iron ions, whereas transferrin (apotransferrin) remains associated with CD71 and recycles to the cell surface, where it is released upon exposure to normal pH. CD71 is also involved in uptake of non-transferrin bound iron.

**Synonyms:**

TfR1, p90, Transferrin receptor protein 1

**Product images:**

Immunofluorescence staining of CD71 in Human HeLa cell line using anti-CD71 antibody (MEM-75; green). Actin cytoskeleton decorated by phalloidin (red) and cell nuclei stained with DAPI (blue).



Surface staining of NALM-6 human peripheral blood pre-B cell leukemia cell line with anti-CD71 (MEM-75) biotin; detection by Streptavidin-PE. Total viable cells were used for analysis.