

Product datasheet for **SM3102R**

CD8A Mouse Monoclonal Antibody [Clone ID: MEM-31]

Product data:

Product Type:	Primary Antibodies
Clone Name:	MEM-31
Applications:	FC
Recommended Dilution:	Flow Cytometry analysis of human blood cells using 20 µl reagent / 100 µl of whole blood or 10 ⁶ cells in a suspension. Does not work in Immunohistochemistry on paraffin sections or Western blot.
Reactivity:	Human
Host:	Mouse
Isotype:	IgG2a
Clonality:	Monoclonal
Immunogen:	Crude thymus membrane fraction
Specificity:	The antibody recognizes a conformationally-dependent epitope of CD8 antigen.
Formulation:	Phosphate buffered saline (PBS) solution containing 15mM sodium azide Label: PE State: Liquid purified Ig fraction Label: Conjugated with R-Phycoerythrin (PE) under optimum conditions. The conjugate is purified by size-exclusion chromatography and adjusted for direct use.
Conjugation:	PE
Storage:	Store at 2-8 °C. Do not freeze. Avoid prolonged exposure to light.
Stability:	Shelf life: one year from despatch.
Gene Name:	CD8a molecule
Database Link:	Entrez Gene 925 Human P01732



[View online »](#)

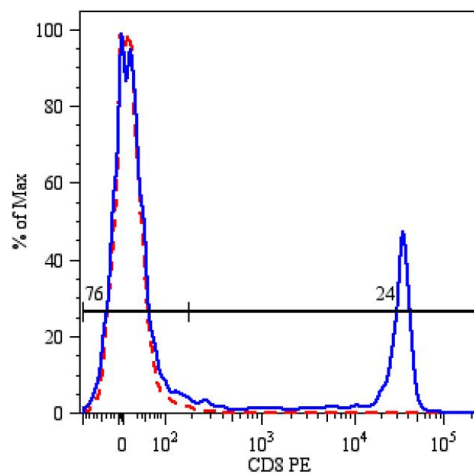
Background: The CD8 T cell coreceptor (monomer approx. 32-34 kDa) is expressed as ab heterodimer on majority of MHC I-restricted conventional T cells and thymocytes and as aa homodimer on subsets of memory T cells, intraepithelial lymphocytes, NK cells and dendritic cells. Regulation of CD8b level on T cell surface seems to be an important mechanism to control their effector function. Assembly of CD8 a-b but not a-a dimers is connected with formation or localization to the lipid rafts. Recruiting triggered TCR complexes to these membrane microdomains as well as affinity of TCR to MHC I is modulated by CD8, thereby affecting the functional diversity of the TCR signaling.

Synonyms: CD8 alpha chain, CD8A, MAL

Protein Families: Adult stem cells, Druggable Genome, ES Cell Differentiation/IPS, Secreted Protein, Transmembrane

Protein Pathways: Antigen processing and presentation, Cell adhesion molecules (CAMs), Hematopoietic cell lineage, Primary immunodeficiency, T cell receptor signaling pathway

Product images:



Surface staining of human peripheral blood lymphocytes using anti-human CD8 (clone MEM-31) PE.