

Product datasheet for **SM3102P**

CD8A Mouse Monoclonal Antibody [Clone ID: MEM-31]

Product data:

Product Type:	Primary Antibodies
Clone Name:	MEM-31
Applications:	FC, IP
Recommended Dilution:	Flow Cytometry (1 µl/ml). Immunoprecipitation. The antibody does not react with formaldehyde-fixed cells; negative in Western Blotting application.
Reactivity:	Human
Host:	Mouse
Isotype:	IgG2a
Clonality:	Monoclonal
Immunogen:	Crude thymus membrane fraction
Specificity:	The antibody recognizes a conformationally-dependent epitope of CD8 antigen.
Formulation:	Phosphate buffered saline (PBS) with 15 mM sodium azide, approx. pH 7.4 State: Purified State: Liquid Ig fraction
Concentration:	lot specific
Purification:	Protein-A affinity chromatography; purity: > 95 % (by SDS-PAGE)
Conjugation:	Unconjugated
Storage:	Store undiluted at 2-8°C. DO NOT FREEZE!
Stability:	Shelf life: one year from despatch.
Gene Name:	CD8a molecule
Database Link:	Entrez Gene 925 Human P01732



[View online »](#)

Background:

The CD8 T cell coreceptor (monomer approx. 32-34 kDa) is expressed as ab heterodimer on majority of MHC I-restricted conventional T cells and thymocytes and as aa homodimer on subsets of memory T cells, intraepithelial lymphocytes, NK cells and dendritic cells. Regulation of CD8b level on T cell surface seems to be an important mechanism to control their effector function. Assembly of CD8 a-b but not a-a dimers is connected with formation or localization to the lipid rafts. Recruiting triggered TCR complexes to these membrane microdomains as well as affinity of TCR to MHC I is modulated by CD8, thereby affecting the functional diversity of the TCR signaling.

Synonyms:

CD8 alpha chain, CD8A, MAL

Protein Families:

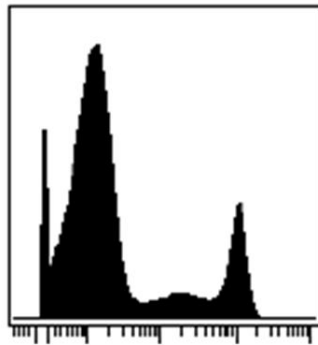
Adult stem cells, Druggable Genome, ES Cell Differentiation/IPS, Secreted Protein, Transmembrane

Protein Pathways:

Antigen processing and presentation, Cell adhesion molecules (CAMs), Hematopoietic cell lineage, Primary immunodeficiency, T cell receptor signaling pathway

Product images:

clone MEM-31



CD8 Sm152

Surface staining (mass cytometry) of PBMC after Ficoll-Paque separation with anti-human CD8 (MEM-31) Sm152. Gated on singlets.

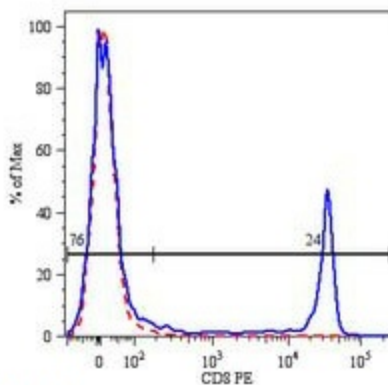


Fig. 1.

Surface staining of human peripheral blood lymphocytes using anti-human CD8 (clone MEM-31) PE