

Product datasheet for **SM3102B**

CD8A Mouse Monoclonal Antibody [Clone ID: MEM-31]

Product data:

Product Type:	Primary Antibodies
Clone Name:	MEM-31
Applications:	FC
Recommended Dilution:	Flow cytometry (recommended starting dilution: 1:2500). The antibody does not react with formaldehyde-fixed cells; negative in Western Blotting application.
Reactivity:	Human
Host:	Mouse
Isotype:	IgG2a
Clonality:	Monoclonal
Immunogen:	Crude thymus membrane fraction
Specificity:	This antibody recognizes a conformationally-dependent epitope of CD8, a cell surface glycoprotein found on most cytotoxic T lymphocytes that mediates efficient cell-cell interactions within the immune system. CD8 is a disulfide-linked dimer and exists as a CD8 α homodimer or CD8 α / β heterodimer (each monomer approx. 32-34 kDa).
Formulation:	Phosphate buffered saline (PBS) with 15 mM sodium azide, approx. pH 7.4 Label: Biotin State: Liquid purified Ig fraction Label: Conjugated with Biotin-LC-NHS under optimum conditions. The reagent is free of unconjugated biotin.
Concentration:	lot specific
Conjugation:	Biotin
Storage:	Store the antibody undiluted at 2 - 8 °C. DO NOT FREEZE!
Stability:	Shelf life: one year from despatch.
Gene Name:	CD8a molecule
Database Link:	Entrez Gene 925 Human P01732



[View online »](#)

Background:

The CD8 T cell coreceptor (monomer approx. 32-34 kDa) is expressed as $\alpha\beta$ heterodimer on majority of MHC I-restricted conventional T cells and thymocytes and as $\alpha\alpha$ homodimer on subsets of memory T cells, intraepithelial lymphocytes, NK cells and dendritic cells. Regulation of CD8 β level on T cell surface seems to be an important mechanism to control their effector function. Assembly of CD8 $\alpha\beta$ but not $\alpha\alpha$ dimers is connected with formation or localization to the lipid rafts. Recruiting triggered TCR complexes to these membrane microdomains as well as affinity of TCR to MHC I is modulated by CD8, thereby affecting the functional diversity of the TCR signaling.

Synonyms:

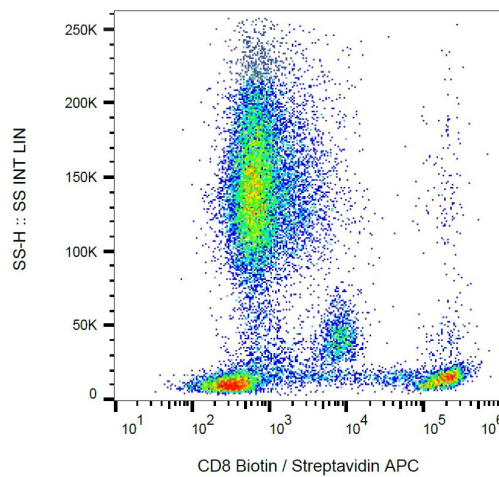
CD8 alpha chain, CD8A, MAL

Protein Families:

Adult stem cells, Druggable Genome, ES Cell Differentiation/IPS, Secreted Protein, Transmembrane

Protein Pathways:

Antigen processing and presentation, Cell adhesion molecules (CAMs), Hematopoietic cell lineage, Primary immunodeficiency, T cell receptor signaling pathway

Product images:

Surface staining of human peripheral blood using anti-human CD8 (clone MEM-31) biotin.