

Product datasheet for **SM3092P**

Blood Group Lewis b Antigen Mouse Monoclonal Antibody [Clone ID: 2-25LE]

Product data:

Product Type:	Primary Antibodies
Clone Name:	2-25LE
Applications:	ELISA, IHC, WB
Recommended Dilution:	ELISA. Western blot. Immunohistochemistry on Paraffin Sections: 5-10 µg/ml for 30 min at RT. Staining of formalin-fixed tissues REQUIRES boiling tissue sections in 10mM citrate buffer, pH 6.0, for 10-20 minutes followed by cooling at RT for 20 min. Positive Control: Human colon adenocarcinoma.
Reactivity:	Human
Host:	Mouse
Isotype:	IgG1
Clonality:	Monoclonal
Immunogen:	Mucin isolated by size exclusion chromatography from an ovarian cyst fluid (pure endocervical type according to the Fenoglio's classification).
Specificity:	The antibody 2-25LE reacts with Lewis b blood group antigen, a carbohydrate determinant carried on both glycolipids and glycoproteins, detected on erythrocytes, certain epithelial cells, and in secretions of certain individuals. It does not react with the blood group H type 2 antigens or with Lewis A, Sialyl Lewis A, Lewis X, Sialyl Lewis X, Lewis Y, and Lewis C.
Formulation:	PBS, pH 7.4 State: Purified State: Liquid purified Ig fraction (> 95% pure by SDS-PAGE) Preservative: 15 mM Sodium Azide
Concentration:	lot specific
Purification:	Affinity Chromatography on Protein A
Conjugation:	Unconjugated
Storage:	Store undiluted at 2-8°C for 6 months or (in aliquots) at -20°C for longer. Avoid freeze/thaw cycles.



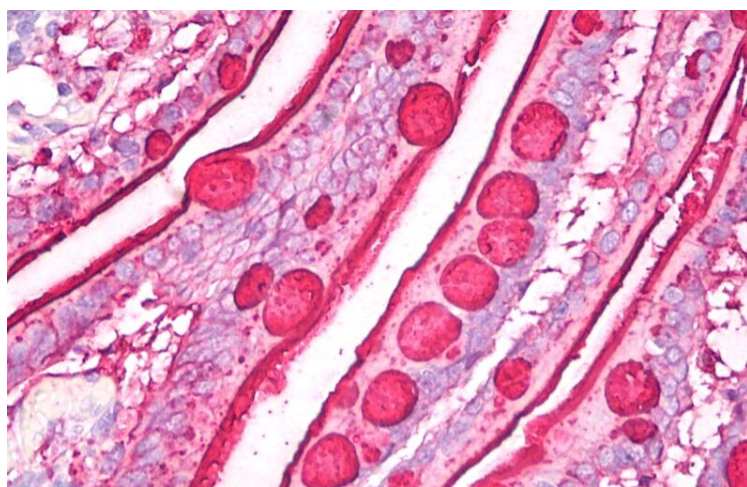
[View online »](#)

Stability: Shelf life: one year from despatch.

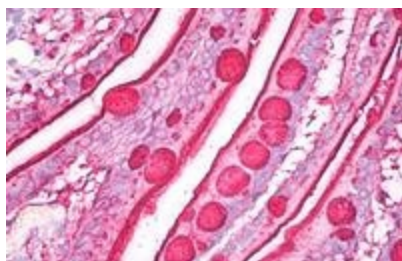
Background: Blood group antigens are generally defined as molecules formed by sequential addition of saccharides to the carbohydrate side chains of lipids and proteins detected on erythrocytes and certain epithelial cells. The A, B and H antigens are reported to undergo modulation during malignant cellular transformation. Blood group related antigens represent a group of carbohydrate determinants carried on both glycolipids and glycoproteins. They are usually mucin type, and are detected on erythrocytes, certain epithelial cells, and in secretions of certain individuals. Sixteen genetically and biosynthetically distinct but inter related specificities belong to this group of antigens, including A, B, H, Lewis A, Lewis B, Lewis X, Lewis Y, and precursor type 1 chain antigens.

Synonyms: Blood Group Antigen Lewis b

Product images:



Immunohistochemistry staining of human small intestine (paraffin sections) using anti-blood group Lewis b (clone 2-25LE).



Immunohistochemistry staining of human small intestine (paraffin sections) using anti-blood group Lewis b (clone 2-25LE).