

Product datasheet for **SM3091P**

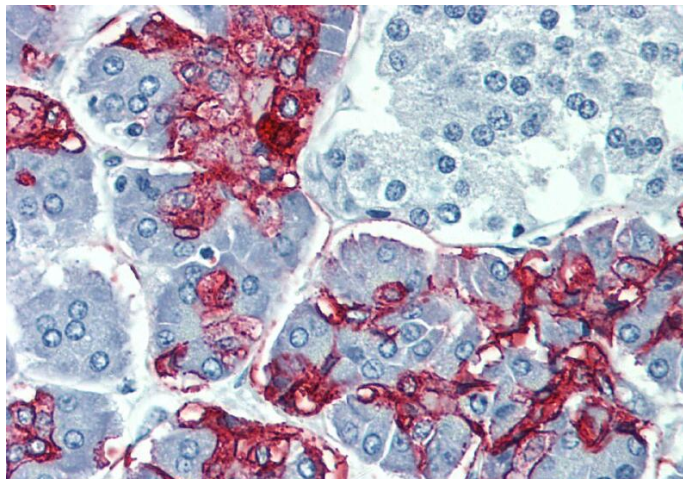
Blood Group Lewis a Antigen Mouse Monoclonal Antibody [Clone ID: 7LE]

Product data:

Product Type:	Primary Antibodies
Clone Name:	7LE
Applications:	ELISA, IHC, WB
Recommended Dilution:	Immunohistochemistry (paraffin section): 5 µg/ml (antigen retrieval with sodium citrate). Positive control: colorectal adenocarcinoma. Western Blotting. ELISA.
Reactivity:	Human
Host:	Mouse
Isotype:	IgG1
Clonality:	Monoclonal
Immunogen:	Mucin isolated by size-exclusion chromatography from an ovarian cyst fluid (pure endocervical type according to the Fenoglio's classification)
Specificity:	The antibody recognizes Lewis a blood group antigen. Lewis a may be useful for detection of gastrointestinal, pancreatic and colorectal tumors.
Formulation:	Phosphate buffered saline (PBS) with 15 mM sodium azide, approx. pH 7.4 State: Purified State: Liquid Ig fraction
Concentration:	lot specific
Purification:	Protein-A affinity chromatography; purity: > 95 % (by SDS-PAGE)
Conjugation:	Unconjugated
Storage:	Store the antibody at 2 - 8 °C up to one month or (in aliquots) at -20 °C for longer. Avoid repeated freezing and thawing.
Stability:	Shelf life: one year from despatch.
Background:	Lewis a blood group antigen is a carbohydrate determinant carried on both glycolipids and glycoproteins, expressed in colonic epithelial cells.



[View online »](#)

Product images:

Immunohistochemistry staining of human pancreas (paraffin-embedded sections) with anti-Blood Group Lewis a (7LE).