

Product datasheet for **SM3090P**

alpha 1 Fetoprotein (AFP) Mouse Monoclonal Antibody [Clone ID: AFP-11]

Product data:

Product Type:	Primary Antibodies
Clone Name:	AFP-11
Applications:	ELISA, IHC, R, WB
Recommended Dilution:	Western Blot: 2 µg/ml, non-reducing conditions. Immunohistochemistry on paraffin sections: 10 µg/ml; Application note: heat mediated antigen retrieval (sodium citrate buffer); mAb incubation 1 hour / RT; detection DAB. <i>Positive control:</i> hepatocellular carcinoma. ELISA: The antibody AFP-11 has been tested as the capture antibody in a sandwich ELISA for analysis of human alpha-Fetoprotein in combination with antibody clone AFP-01 (cat. no. SM3089P/PX). RadiolImmunoAssay.
Reactivity:	Human
Host:	Mouse
Isotype:	IgG1
Clonality:	Monoclonal
Immunogen:	Purified alpha-Fetoprotein
Specificity:	The antibody detects Alpha-Fetoprotein (AFP), an oncofetal antigen of 70 kDa.
Formulation:	PBS, pH 7.4 containing 15 mM sodium azide as preservative State: Purified State: Liquid purified immunoglobulin fraction
Concentration:	lot specific
Purification:	Purified by protein-A affinity chromatography.
Conjugation:	Unconjugated
Storage:	Store the antibody undiluted at 2-8°C for one month or (in aliquots) at -20°C for longer. Avoid repeated freezing and thawing.
Stability:	Shelf life: one year from despatch.
Database Link:	Entrez Gene 174 Human P02771

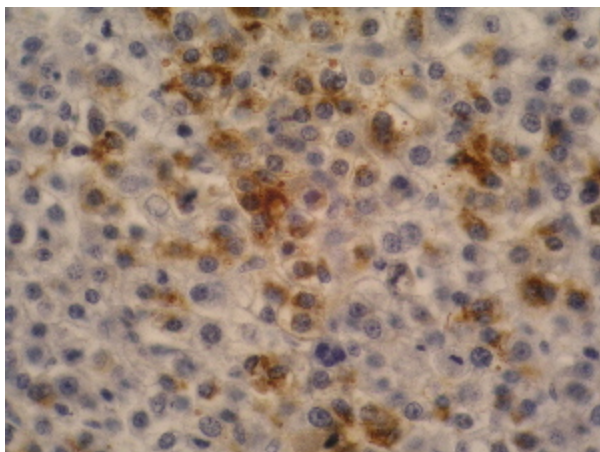


[View online »](#)

Background: AFP is a major fetal plasma protein, but is not present in healthy adult tissues. Elevated AFP concentrations in adult plasma may be an early marker of hepatocellular carcinoma or teratoblastoma, while high concentrations in amniotic fluid may indicate severe congenital defects of a fetus.

Synonyms: Alpha-1-fetoprotein, Alpha-fetoglobulin, HPAFP

Product images:



Immunohistochemistry staining of hepatocellular carcinoma (fetal liver; paraffin-embedded sections) with anti-human alpha-Fetoprotein (AFP-11).