

Product datasheet for **SM3087P**

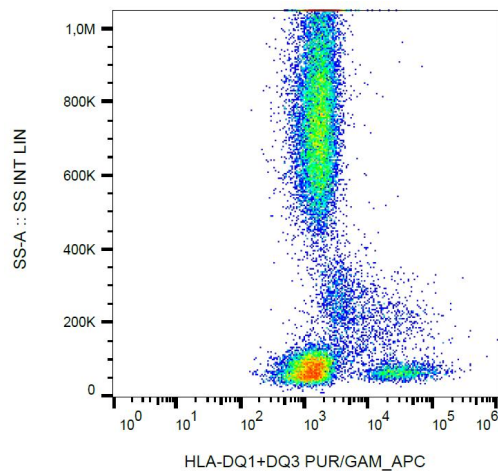
HLA Class II DQ1+DQ3 Mouse Monoclonal Antibody [Clone ID: HL-37]

Product data:

Product Type:	Primary Antibodies
Clone Name:	HL-37
Applications:	FC, IP, WB
Recommended Dilution:	Flow cytometry: 5 µg/ml. Immunoprecipitation. Western blot under non reducing conditions.
Reactivity:	Human, Porcine
Host:	Mouse
Isotype:	IgG3
Clonality:	Monoclonal
Immunogen:	Burkitt's lymphoma cell line Raji
Specificity:	The antibody reacts with polymorphic determinant on human HLA-DQ1 and HLA-DQ3 molecules (recognized epitope was found on isolated beta chain of DQ1), but does not react with HLA-DQ2.
Formulation:	Phosphate buffered saline (PBS), pH 7.4 State: Purified State: Liquid Ig fraction Preservative: 15 mM sodium azide
Concentration:	lot specific
Purification:	Protein-A affinity chromatography; purity: > 95% (by SDS-PAGE)
Conjugation:	Unconjugated
Storage:	Store undiluted at 2-8°C. DO NOT FREEZE!
Stability:	Shelf life: one year from despatch.
Background:	DQ is the isotype of human MHC Class II molecules expressed on antigen-presenting cells (APC; dendritic cells, B lymphocytes, monocytes, macrophages).
Synonyms:	HLA-DQ



[View online »](#)

Product images:

Surface staining of human peripheral blood cells with anti-HLA-DQ1+DQ3 (HL-37) purified, GAM-APC.