

Product datasheet for **SM3086F**

CD1 (CD1A) Mouse Monoclonal Antibody [Clone ID: HI149]

Product data:

Product Type:	Primary Antibodies
Clone Name:	HI149
Applications:	FC
Recommended Dilution:	Flow Cytometry analysis of human cells using 20 µl reagent / 100 ml of whole blood or 10e6 cells in a suspension.
Reactivity:	Human
Host:	Mouse
Isotype:	IgG1
Clonality:	Monoclonal
Immunogen:	Human thymocytes
Specificity:	<p>The antibody reacts with CD1a (T6), a 49 KDa polypeptide associated with, b2-microglobulin expressed on cortical thymocytes (strongly), Langerhans cells, dendritic cells and some T cell leukemias and lymphomas.</p> <p>The antibody does not react with peripheral blood T and B lymphocytes, monocytes, granulocytes, platelets and erythrocytes.</p>
Formulation:	<p>Phosphate buffered saline (PBS) containing 15 mM sodium azide and 0.2% (w/v) high-grade protease free Bovine Serum Albumin (BSA) as a stabilizing agent.</p> <p>Label: FITC</p> <p>State: Liquid purified Ig fraction</p> <p>Label: Fluorescein isothiocyanate under optimum conditions. The reagent is free of unconjugated and adjusted for direct use</p>
Conjugation:	FITC
Storage:	Store the antibody at 2 - 8 °C. DO NOT FREEZE! This product is photosensitive and should be protected from light.
Stability:	Shelf life: one year from despatch.
Gene Name:	CD1a molecule
Database Link:	Entrez Gene 909 Human P06126



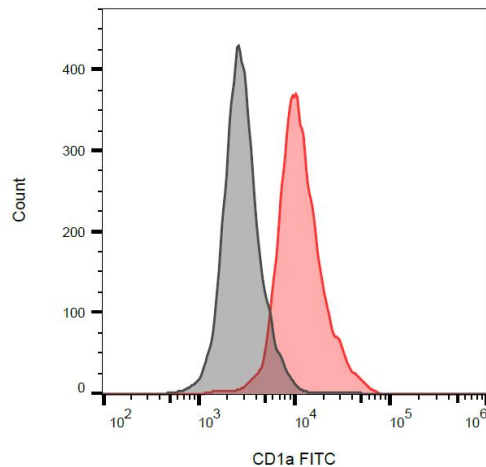
[View online »](#)

Background:

CD1a, together with CD1b and c, belongs to group 1 of CD1 glycoproteins. These proteins serve as antigen-presenting molecules for a subset of T cells that responds to specific lipids and glycolipids found in the cell walls of bacterial pathogens or self-glycolipid antigens such as gangliosides, and they have also roles in antiviral immunity. Unlike CD1b, CD1a is excluded from late endosomal compartments and instead traffics independently in the recycling pathway of the early endocytic system, and CD1a antigen presentation is independent upon vesicular acidification.

Synonyms:

T6/Leu-6, hTa1

Product images:

Detection of human CD1a on the surface of MOLT-4 cells (compared with blank) using anti-human CD1a (HI149) FITC.