

Product datasheet for **SM3085R**

CD22 Mouse Monoclonal Antibody [Clone ID: MEM-01]

Product data:

Product Type:	Primary Antibodies
Clone Name:	MEM-01
Applications:	FC
Recommended Dilution:	Flow Cytometry: Neat - 1/10; Use 10µl of the suggested working dilution to label 10e6 cells in 100µl.
Reactivity:	Human
Host:	Mouse
Isotype:	IgG1
Clonality:	Monoclonal
Immunogen:	Burkitts lymphoma cell line Raji
Specificity:	This antibody recognises the CD22 cell surface antigen, a 130/140kD glycoprotein expressed by cells of B lymphocyte lineage.
Formulation:	PBS, pH7.4 containing 0.09% Sodium Azide and 1% Bovine Serum Albumin Label: PE State: Lyophilized purified IgG Label: R. Phycoerythrin (RPE)
Reconstitution Method:	Restore with 1 ml distilled water
Concentration:	lot specific
Purification:	Affinity chromatography on Protein A
Conjugation:	PE
Storage:	Prior to and following reconstitution store the antibody at 2-8°C. DO NOT FREEZE! This product is photosensitive and should be protected from light.
Stability:	Shelf life: one year from despatch.
Gene Name:	CD22 molecule
Database Link:	Entrez Gene 933 Human P20273

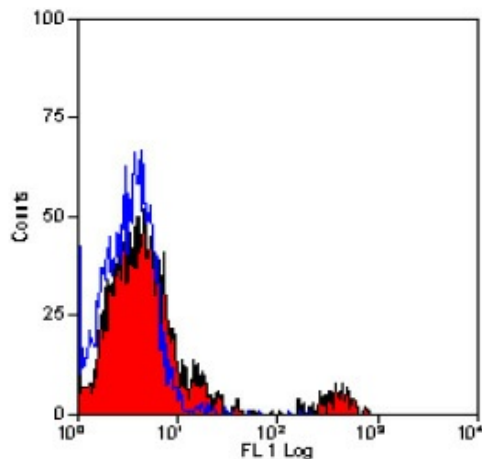


[View online »](#)

Background: CD22 is initially expressed cytoplasmically and subsequently on the cell surface during B cell maturation. It is lost upon terminal differentiation to plasma cells.

Synonyms: SIGLEC2, Siglec-2, B-cell receptor CD22, Leu-14, BL-CAM

Product images:



Staining of human peripheral blood lymphocytes with MOUSE ANTI HUMAN CD22: RPE.