

## Product datasheet for **SM3085PX**

### CD22 Mouse Monoclonal Antibody [Clone ID: MEM-01]

#### Product data:

Product Type:	Primary Antibodies
Clone Name:	MEM-01
Applications:	FC, IP, WB
Recommended Dilution:	Flow Cytometry: 1/100 - 1/200; Use 10µl of the suggested working dilution to label 10e6 cells in 100µl. Western Blot. Immunoprecipitation: Non-reducing conditions.
Reactivity:	Human
Host:	Mouse
Isotype:	IgG1
Clonality:	Monoclonal
Immunogen:	Burkitts lymphoma cell line Raji
Specificity:	This antibody recognises the CD22 cell surface antigen, a 130/140kD glycoprotein expressed by cells of B lymphocyte lineage. This antibody detects a band of approximately 140kD in cell lysates under non reducing conditions.
Formulation:	PBS, pH7.4 containing 0.09% Sodium Azide State: Purified State: Liquid purified IgG
Concentration:	lot specific
Purification:	Affinity chromatography on Protein A
Conjugation:	Unconjugated
Storage:	Store the antibody undiluted at 2-8°C for one month or (in aliquots) at -20°C for longer. Avoid repeated freezing and thawing.
Stability:	Shelf life: one year from despatch.
Gene Name:	CD22 molecule
Database Link:	<a href="#">Entrez Gene 933 Human P20273</a>

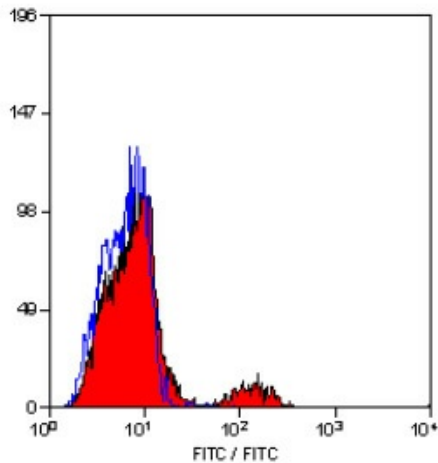


[View online »](#)

**Background:** CD22 is initially expressed cytoplasmically and subsequently on the cell surface during B cell maturation. It is lost upon terminal differentiation to plasma cells.

**Synonyms:** SIGLEC2, Siglec-2, B-cell receptor CD22, Leu-14, BL-CAM

**Product images:**



Staining of human peripheral blood lymphocytes with MOUSE ANTI HUMAN CD22.