

Product datasheet for **SM3085P**

CD22 Mouse Monoclonal Antibody [Clone ID: MEM-01]

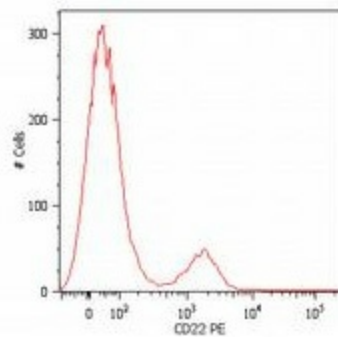
Product data:

Product Type:	Primary Antibodies
Clone Name:	MEM-01
Applications:	FC, IP, WB
Recommended Dilution:	Flow cytometry: 2-4 µg/ml. Immunoprecipitation. Western blot: Recommended dilution: 2-4 µg/ml, 120 min on vertical incubator Positive control: RAJI human lymphoma cell line Sample preparation: Resuspend approx. 50 mil. cells in 1 ml cold Lysis buffer (1% laurylmaltoside in 20 mM Tris/Cl, 100 mM NaCl pH 8.2, 50 mM NaF including Protease inhibitor Cocktail). Incubate 60 min on ice. Centrifuge to remove cell debris. Mix lysate with non-reducing SDS-PAGE sample buffer.
Reactivity:	Human, Primate
Host:	Mouse
Isotype:	IgG1
Clonality:	Monoclonal
Immunogen:	Raji Burkitt's lymphoma cell line
Specificity:	The antibody reacts with CD22 (BL-CAM), a 130 kDa type I transmembrane glycoprotein (immunoglobulin superfamily) expressed in the cytoplasm of pro-B and pre-B lymphocytes, and on the surface of mature and activated B lymphocytes; it is lost on plasma cells, peripheral blood T lymphocytes, granulocytes and monocytes. It cross-blocks the antibody clone OTH228 that recognizes uniquely epitope "E"; it does not cross-block antibody clones RFB-4, CLB22/1 and CLB-BLy1. The antibody stains only the zone corresponding to 140 kDa, but not the weaker 130 kDa zone (stained by several CD22 antibodies recognizing both isoforms).
Formulation:	Phosphate buffered saline (PBS) with 15 mM sodium azide, approx. pH 7.4 State: Purified State: Liquid Ig fraction
Concentration:	lot specific
Purification:	Protein-A affinity chromatography; purity: > 95% (by SDS-PAGE)
Conjugation:	Unconjugated


[View online »](#)

Storage:	Store the antibody at 2 - 8 °C up to one month or (in aliquots) at -20 °C for longer. Avoid repeated freezing and thawing.
Stability:	Shelf life: one year from despatch.
Gene Name:	CD22 molecule
Database Link:	Entrez Gene 933 Human P20273
Background:	CD22, also known as Siglec-2 (sialic acid-binding immunoglobulin-like lectin-2) is a transmembrane glycoprotein binding alpha2,6-linked sialic acid-bearing ligands. Intracellular domain of CD22 recruits protein tyrosine phosphatase SHP-1 through the immunoreceptor tyrosine-based inhibitory motifs (ITIMs), thus setting a threshold for B cell receptor-mediated activation. CD22 also regulates B-cell response by involvement in controlling the CD19/CD21-Src-family protein tyrosine kinase amplification pathway and CD40 signaling. CD22 exhibits hallmarks of clathrin-mediated endocytic pathway.
Synonyms:	SIGLEC2, Siglec-2, B-cell receptor CD22, Leu-14, BL-CAM

Product images:



Surface staining of human peripheral blood cells with anti-CD22 (MEM-01) PE. Cells in the lymphocyte gate were used for analysis.