

Product datasheet for **SM3081P**

CD52 Mouse Monoclonal Antibody [Clone ID: HI186]

Product data:

Product Type:	Primary Antibodies
Clone Name:	HI186
Applications:	FC, IHC
Recommended Dilution:	Flow Cytometry: 2 µg/ml. Immunohistochemistry on Frozen Sections. Immunohistochemistry on Paraffin-Embedded Sections.
Reactivity:	Human
Host:	Mouse
Isotype:	IgG2b
Clonality:	Monoclonal
Immunogen:	Human tonsil
Specificity:	This antibody Clone HI186 reacts with CD52, a 21-28 kDa glycoprotein containing a large N-linked carbohydrate moiety. Mature CD52 molecule is actually much smaller (approx. 8-9 kDa).
Formulation:	PBS, pH~7.4 State: Purified State: Liquid purified Ig fraction (> 95% pure by SDS-PAGE) Preservative: 15 mM Sodium Azide
Concentration:	lot specific
Purification:	Protein A Chromatography
Conjugation:	Unconjugated
Storage:	Store undiluted at 2-8°C. DO NOT FREEZE!
Stability:	Shelf life: one year from despatch.
Gene Name:	CD52 molecule
Database Link:	Entrez Gene 1043 Human P31358



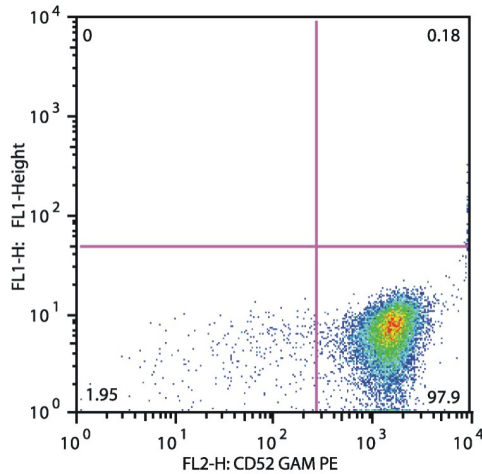
[View online »](#)

Background:

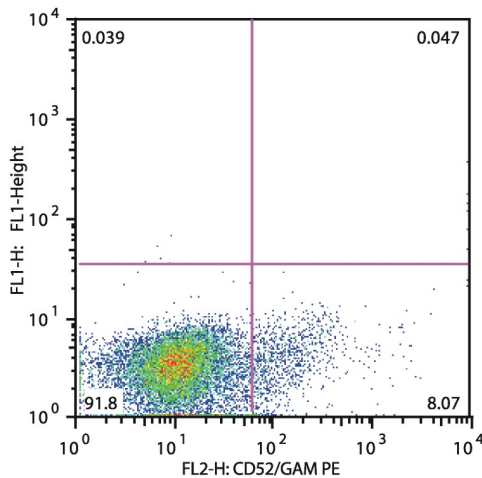
CD52 (CAMPATH-1, HE5) is a highly glycosylated GPI-anchored 21-28 kDa glycopeptide which is present at high levels on lymphocytes, macrophages, epithelial cells of male reproductive tract and mature sperm. Its 12-amino acid backbone carries a complex N-linked carbohydrate moiety, which differs between sperm and leukocyte CD52, as well as the GPI anchor does. CD52 can be acquired by sperm cells from seminal plasma, where it is released by epithelial cells. Although CD52 is not an essential T-cell costimulator, its triggering results in activation of normal human T cells. CD52 is a very good target for antibody/complement-mediated cell lysis.

Synonyms:

HE5, CDw52

Product images:


Flow cytometry analysis of CD52 in patients suffering with Acute Lymphoblastic Leukemia (anti-human CD52 (HI186); detection by Goat anti-mouse IgG2b PE). Fig. 1A --CD52 negative pro T ALL (gate leukemic cells) Fig. 1B --CD52 positive cALL (gate leukemic cells)



Flow cytometry analysis of CD52 in patients suffering with Acute Lymphoblastic Leukemia (anti-human CD52 (HI186); detection by Goat anti-mouse IgG2b PE). Fig. 1A --CD52 negative pro T ALL (gate leukemic cells) Fig. 1B --CD52 positive cALL (gate leukemic cells)