

Product datasheet for **SM3079P**

Cytokeratin 8 (KRT8) Mouse Monoclonal Antibody [Clone ID: C-43]

Product data:

Product Type:	Primary Antibodies
Clone Name:	C-43
Applications:	FACS, IF, IHC, IP, WB
Recommended Dilution:	Western Blot. Immunoprecipitation. Immunocytochemistry. Flow Cytometry: 1-5 µg/ml, intracellular staining. Immunohistochemistry on Paraffin Sections: 10 µg/ml. Heat induced antigen retrieval in pH 6.0 citrate buffer is recommended. Positive Tissue: Prostate.
Reactivity:	Bovine, Human, Porcine, Rabbit, Sheep
Host:	Mouse
Isotype:	IgG1
Clonality:	Monoclonal
Immunogen:	Cytoskeleton preparation from HeLa Human cervix carcinoma cell line.
Specificity:	The antibody C-43 reacts with Cytokeratin 8 (52.5 kDa). Negative Species: Mouse, Rat, Hamster, Chicken and Xenopus.
Formulation:	Phosphate buffered saline (PBS), pH~7.4 State: Aff - Purified State: Liquid purified IgG fraction (> 95% pure by SDS-PAGE) Preservative: 15mM Sodium Azide
Concentration:	lot specific
Purification:	Affinity Chromatography on Protein A
Conjugation:	Unconjugated
Storage:	Store undiluted at 2-8°C. DO NOT FREEZE!
Stability:	Shelf life: one year from despatch.
Predicted Protein Size:	52.5 kDa



[View online »](#)

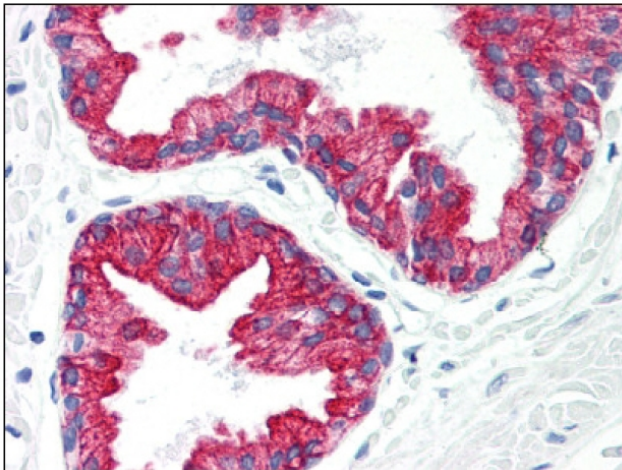
Gene Name: keratin 8

Database Link: [Entrez Gene 3856 Human P05787](#)

Background: Cytokeratins are a subfamily of intermediate filaments and characterized by remarkable biochemical diversity. Cytokeratins are represented in epithelial tissues by at least 20 different polypeptides, molecular weight between 40 kDa and 68 kDa. The individual cytokeratin polypeptides are designated 1 to 20 and divided into the type I (acidic cytokeratins 9-20) and type II (basic to neutral cytokeratins 1-8) families. Cytokeratin 8 belongs to the type B (basic) subfamily of high molecular weight keratins and exists in combination with cytokeratin 18. Cytokeratin 8 is primarily found in the non squamous epithelia and is present in majority of adenocarcinomas and ductal carcinomas. It is absent in squamous cell carcinomas. Hepatocellular carcinomas are defined by the use of antibodies that recognize only cytokeratin polypeptides 8 and 18.

Synonyms: KRT8, CYK8, Cytokeratin-8, CK8, Keratin-8, K8, Cytokeratin endo A

Product images:



Formalin-Fixed, Paraffin-Embedded Human prostate stained with Cytokeratin 8 antibody followed by biotinylated Horse anti-Mouse IgG secondary antibody, alkaline phosphatase-streptavidin and chromogen.