

Product datasheet for **SM3078R**

CD105 (ENG) Mouse Monoclonal Antibody [Clone ID: MEM-226]

Product data:

Product Type:	Primary Antibodies
Clone Name:	MEM-226
Applications:	FC
Recommended Dilution:	Flow Cytometry analysis of Human blood cells using 20 µl reagent / 100 µl of whole blood or 10 ⁶ cells in a suspension. The content of a vial (2 ml) is sufficient for 100 tests.
Reactivity:	Human, Rat
Host:	Mouse
Isotype:	IgG2a
Clonality:	Monoclonal
Immunogen:	Recombinant Vaccinia virus containing the Human CD105 cDNA
Specificity:	This antibody reacts with CD105 (Endoglin), a 180 kDa type I homodimerizing membrane glycoprotein expressed on vascular endothelial cells (small and large vessels), activated monocytes and tissue macrophages, stromal cells of certain tissues including bone marrow, pre-B lymphocytes in fetal marrow and erythroid precursors in fetal and adult bone marrow; it is also present on syncytiotrophoblast on placenta throughout pregnancy.
Formulation:	PBS Label: PE State: Liquid purified Ig fraction Stabilizer: 0.2% (w/v) high-grade protease free BSA Preservative: 15 mM Sodium Azide Label: Conjugated with R-Phycoerythrin (PE) under optimum conditions. The conjugate is purified by size-exclusion chromatography and adjusted for direct use.
Purification:	Size-Exclusion Chromatography
Conjugation:	PE
Storage:	Store the antibody at 2-8°C. DO NOT FREEZE! This product is photosensitive and should be protected from light.
Stability:	Shelf life: one year from despatch.



[View online »](#)

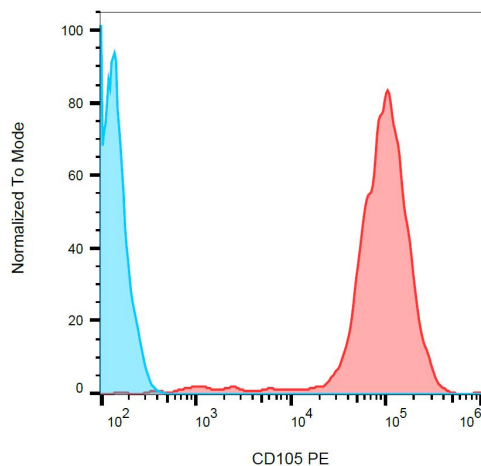
Gene Name: endoglin

Database Link: [Entrez Gene 2022 Human P17813](#)

Background: CD105 (Endoglin) is a homodimeric transmembrane glycoprotein serving in presence of TGFbR-2 as a receptor for TGFb-1 and TGFb-3. CD105 is highly expressed on endothelial cells and promotes angiogenesis during wound healing, infarcts and in a wide range of tumours and its gene expression is stimulated by hypoxia. CD105 prevents apoptosis in hypoxic endothelial cells and also antagonises the inhibitory effects of TGFb-1 on vascular endothelial cell growth and migration. Normal cellular levels of CD105 are required for formation of new blood vessels.

Synonyms: ENG, END, HHT1, ORW, ORW1

Product images:



Surface staining of HUVEC (human umbilical vein endothelial cells) with anti-CD105 (MEM-226) PE. HEK-293 cells used as a negative control.