

Product datasheet for **SM3074R**

SIT (SIT1) Mouse Monoclonal Antibody [Clone ID: SIT-01]

Product data:

Product Type:	Primary Antibodies
Clone Name:	SIT-01
Applications:	FC
Recommended Dilution:	Flow cytometry (1/50, intracellular staining).
Reactivity:	Human, Mouse
Host:	Mouse
Isotype:	IgG1
Clonality:	Monoclonal
Immunogen:	Bacterially produced recombinant intracellular fragment of human SIT
Specificity:	The antibody reacts with SHP2-interacting transmembrane adaptor protein (SIT) expressed exclusively in lymphoid organs.
Formulation:	Phosphate buffered saline (PBS) containing 15 mM sodium azide and 0.2% (w/v) high-grade protease free Bovine Serum Albumin (BSA) as a stabilizing agent Label: PE State: Liquid purified Ig fraction Label: Conjugated with R-Phycoerythrin under optimum conditions. The conjugate is purified by size-exclusion chromatography.
Concentration:	lot specific
Conjugation:	PE
Storage:	Store the antibody at 2 - 8 °C. DO NOT FREEZE! This product is photosensitive and should be protected from light.
Stability:	Shelf life: one year from despatch.
Gene Name:	signaling threshold regulating transmembrane adaptor 1
Database Link:	Entrez Gene 27240 Human Q9Y3P8



[View online »](#)

Background:

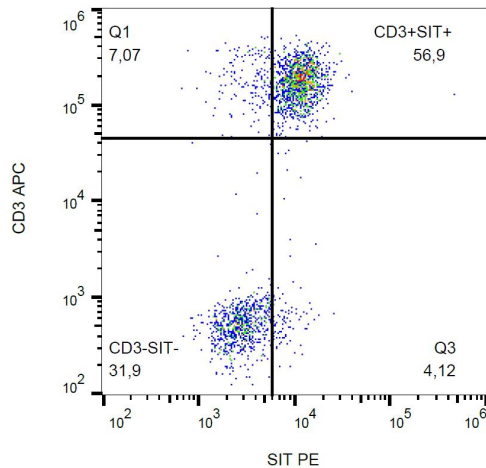
SIT (SHP2-interacting transmembrane adaptor protein) is expressed exclusively in lymphoid organs and acts either as a positive or as a negative regulatory element in T cell activation and in T cell development. Binding to Grb2 plays a pivotal role in signal transduction. Hubener et al. (2001) determined that the SIT gene contains 5 exons and spans 1.8 kb of genomic DNA. The SIT promoter demonstrated strong transcriptional activity and potential binding sites for both ubiquitous and lymphoid-specific transcription factors.

Synonyms:

gp30/40; MGC125908; MGC125909; MGC125910; RP11-331F9.5; SIT

Protein Families:

Transmembrane

Product images:


Intracellular staining of human peripheral blood using anti-SIT (clone SIT-01) PE.