

Product datasheet for **SM3072P**

Prostate Specific Antigen (KLK3) Mouse Monoclonal Antibody [Clone ID: A67-B/E3]

Product data:

Product Type:	Primary Antibodies
Clone Name:	A67-B/E3
Applications:	ELISA, IHC, WB
Recommended Dilution:	ELISA. Western Blotting. <i>Positive Material:</i> seminal plasma. Immunohistochemistry on Paraffin-Embedded Sections (proteolytic digestion of the tissue is essential).
Reactivity:	Human
Host:	Mouse
Isotype:	IgG1
Clonality:	Monoclonal
Immunogen:	30 kDa protein fraction prepared from Human seminal plasma
Specificity:	The antibody A67-B/E3 reacts with Prostate-Specific Antigen (PSA), a protein produced by normal prostate cells. The highest amounts of PSA are found in the seminal fluid.
Formulation:	Phosphate buffered saline (PBS), pH~7.4 State: Purified State: Liquid purified Ig fraction (> 95% pure by SDS-PAGE) Preservative: 15 mM Sodium Azide
Concentration:	lot specific
Purification:	Purified by protein-A affinity chromatography.
Conjugation:	Unconjugated
Storage:	Store undiluted at 2-8°C for one month or (in aliquots) at -20°C for longer. Avoid repeated freezing and thawing.
Stability:	Shelf life: one year from despatch.
Predicted Protein Size:	33-34 kDa
Gene Name:	kallikrein related peptidase 3



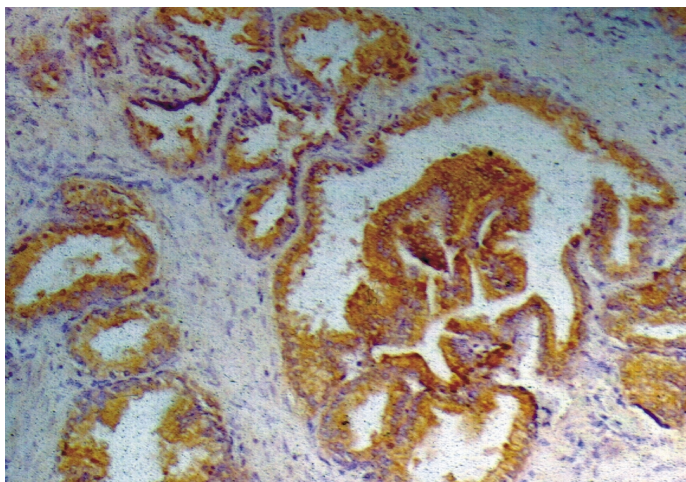
[View online »](#)

Database Link: [Entrez Gene 354 Human P07288](#)

Background: Prostate-specific antigen (PSA) is a protein produced by normal prostate cells. This enzyme participates in the dissolution of the seminal fluid coagulum and plays an important role in fertility. The highest amounts of PSA are found in the seminal fluid; some PSA escapes the prostate and can be found in the serum. This serum component has been used to track the response to therapy in men with prostate cancer.

Synonyms: Prostate-specific antigen, Semenogelase, Gamma-seminoprotein, P-30 antigen

Product images:



Immunohistochemistry staining of prostate (paraffin-embedded sections) with anti-human Prostate-specific antigen (A67-B/E3).