

Product datasheet for **SM3072B**

Prostate Specific Antigen (KLK3) Mouse Monoclonal Antibody [Clone ID: A67-B/E3]

Product data:

Product Type:	Primary Antibodies
Clone Name:	A67-B/E3
Applications:	ELISA, IHC, WB
Recommended Dilution:	Western blot: 1:1000. ELISA.
Reactivity:	Human
Host:	Mouse
Isotype:	IgG1
Clonality:	Monoclonal
Immunogen:	30 KDa protein fraction prepared from human seminal plasma
Specificity:	This antibody reacts with prostate-specific antigen (PSA), a protein produced by normal prostate cells. The highest amounts of PSA are found in the seminal fluid.
Formulation:	Phosphate buffered saline (PBS) with 15 mM sodium azide, approx. pH 7.4 Label: Biotin State: Liquid purified Ig fraction Label: Conjugated with -LC-NHS under optimum conditions. The reagent is free of unconjugated biotin
Concentration:	lot specific
Conjugation:	Biotin
Storage:	Store the antibody undiluted at 2 - 8 °C. DO NOT FREEZE!
Stability:	Shelf life: one year from despatch.
Gene Name:	kallikrein related peptidase 3
Database Link:	Entrez Gene 354 Human P07288



[View online »](#)

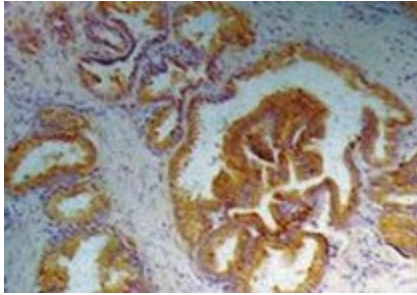
Background: Prostate-specific antigen (PSA) is a protein produced by normal prostate cells. This enzyme participates in the dissolution of the seminal fluid coagulum and plays an important role in fertility. The highest amounts of PSA are found in the seminal fluid; some PSA escapes the prostate and can be found in the serum. This serum component has been used to track the response to therapy in men with prostate cancer.

Synonyms: Prostate-specific antigen, Semenogelase, Gamma-seminoprotein, P-30 antigen

Protein Families: Druggable Genome, Protease, Secreted Protein

Protein Pathways: Pathways in cancer, Prostate cancer

Product images:



Immunohistochemistry staining of prostate (paraffin-embedded sections) with anti-human Prostate-specific antigen (A67-B/E3).