

## Product datasheet for **SM3066P**

### LCK Mouse Monoclonal Antibody [Clone ID: LCK-01]

#### Product data:

Product Type:	Primary Antibodies
Clone Name:	LCK-01
Applications:	FC, IF, IP, WB
Recommended Dilution:	<b>Flow Cytometry.</b> <b>Immunoprecipitation.</b> <b>Western Blotting.</b> <b>Immunocytochemistry.</b>
Reactivity:	Human
Host:	Mouse
Isotype:	IgG1
Clonality:	Monoclonal
Immunogen:	Peptide corresponding to amino acids 22-36 in the sequence of Human Lck
Specificity:	The antibody recognizes defined epitope (aa 22-36) of Lck, a 56 kDa Src-family protein tyrosine kinase. <b>Negative Species:</b> Mouse.
Formulation:	Phosphate Buffered Saline (PBS), pH~7.4 with 15 mM Sodium Azide as preservative. State: Purified State: Liquid purified Ig fraction (> 95% pure by SDS-PAGE).
Concentration:	lot specific
Purification:	Affinity Chromatography on Protein A.
Conjugation:	Unconjugated
Storage:	Store undiluted at 2-8°C. <b>DO NOT FREEZE!</b>
Stability:	Shelf life: one year from despatch.
Gene Name:	LCK proto-oncogene, Src family tyrosine kinase
Database Link:	<a href="#">Entrez Gene 3932 Human P06239</a>



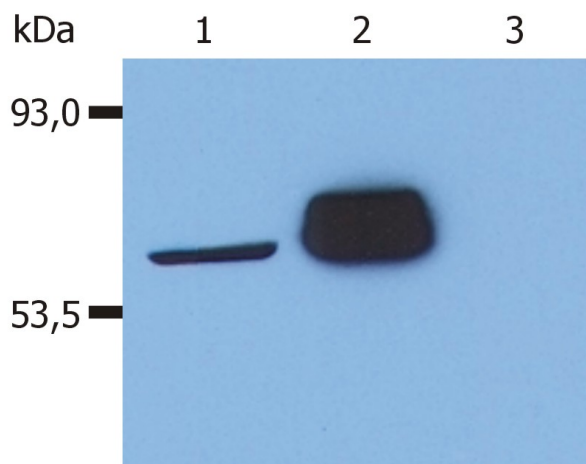
[View online »](#)

**Background:**

Lck is a Src-family tyrosine kinase, which is essential for signaling through the T-cell receptor (TCR) complex. Upon TCR triggering, Lck phosphorylates the ITAM motives in its  $\zeta$  subunits, establishing binding sites for the SH2 domains of the tyrosine kinase ZAP70, which is also phosphorylated by Lck and thereby activated to generate subsequent signaling platforms by phosphorylation of adaptor LAT. Whereas the majority of Lck is localized to the plasma membrane, there is also a significant fraction associated with the Golgi apparatus, which may contribute to Raf activation under conditions of weak stimulation through the TCR. Lck is also involved in the regulation of apoptosis induced by various stimuli, but not by the death receptors.

**Synonyms:**

p56-LCK, LSK

**Product images:**

Western Blotting analysis (reducing conditions) of human Lck in whole cell lysate using anti-human Lck (LCK-01). Lane 1: J. CaM-1.6 cell line (a mutant derivate of the JURKAT cell line) transfected with Lck; Lane 2: HEK-293T cell line transfected with Lck; Lane 3: HEK-293T cell line (non-transfected)