

Product datasheet for **SM3063PE**

Human IgM (Fc specific) Mouse Monoclonal Antibody [Clone ID: CH2]

Product data:

Product Type:	Secondary Antibodies
Product Name:	Human IgM (Fc specific) Mouse Monoclonal Antibody [Clone ID: CH2]
Clone Name:	CH2
Applications:	FC
Recommended Dilution:	Flow cytometry: 0.5 µg/ml.
Reactivity:	Human
Host:	Mouse
Immunogen:	Purified human IgM
Isotype:	IgG1
Formulation:	Phosphate buffered saline (PBS) solution containing 15mM sodium azide Label: PE State: Liquid purified Ig fraction Label: Conjugated with R-Phycoerythrin (PE) under optimum conditions. The conjugate is purified by size-exclusion chromatography.
Concentration:	lot specific
Conjugation:	PE
Storage:	Store the antibody at 2 - 8 °C. DO NOT FREEZE! This product is photosensitive and should be protected from light.



[View online »](#)

Product images:

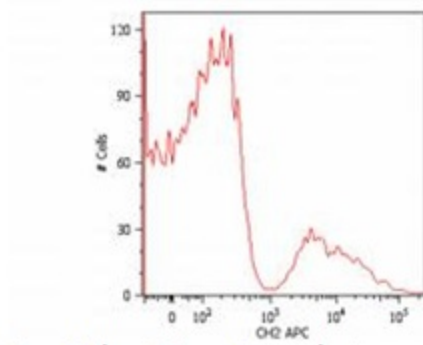
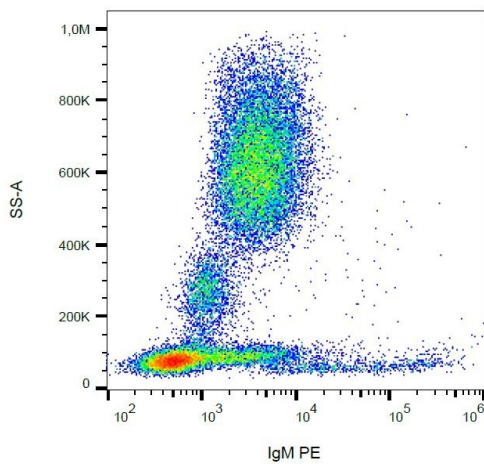
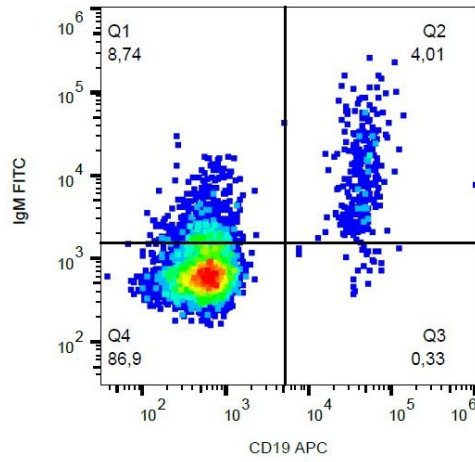


Fig. 1. Flow Cytometry analysis

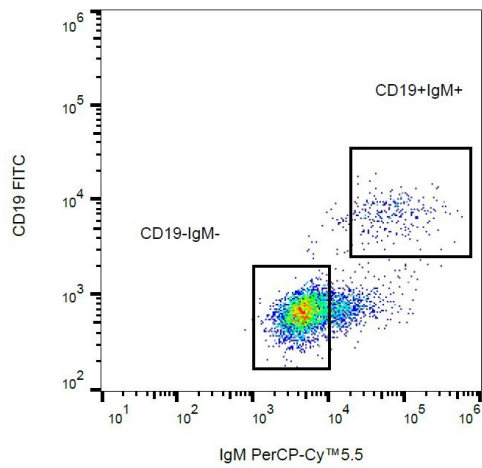
Surface staining of human peripheral blood cells with anti-human IgM (CH2) APC. Cells in the lymphocyte gate were used for analysis.



Surface staining of human peripheral blood cells with anti-human IgM (CH2) PE.



Surface staining of human peripheral blood cells with anti-human IgM (CH2) FITC.



Surface staining of human peripheral blood cells with anti-human IgM (CH2) PerCP-Cy5.5.