

Product datasheet for **SM3063P**

Human IgM (Fc-region) Mouse Monoclonal Antibody [Clone ID: CH2]

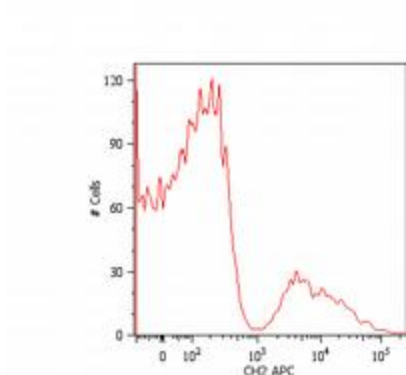
Product data:

Product Type:	Secondary Antibodies
Product Name:	Human IgM (Fc-region) Mouse Monoclonal Antibody [Clone ID: CH2]
Clone Name:	CH2
Applications:	ELISA, FC, IF, WB
Recommended Dilution:	Western blot. Recommended dilution: 1 µg/ml. Flow cytometry: Recommended dilution: 1-4 µg/ml, extracellular and intracellular staining. Immunocytochemistry. ELISA.
Reactivity:	Human
Host:	Mouse
Immunogen:	Purified human IgM
Isotype:	IgG1
Formulation:	Phosphate buffered saline (PBS) with 15 mM sodium azide, approx. pH 7.4 State: Purified State: Liquid Ig fraction
Concentration:	lot specific
Purification:	Purified by protein-A affinity chromatography.
Conjugation:	Unconjugated
Storage:	Store undiluted at 2-8°C. DO NOT FREEZE!

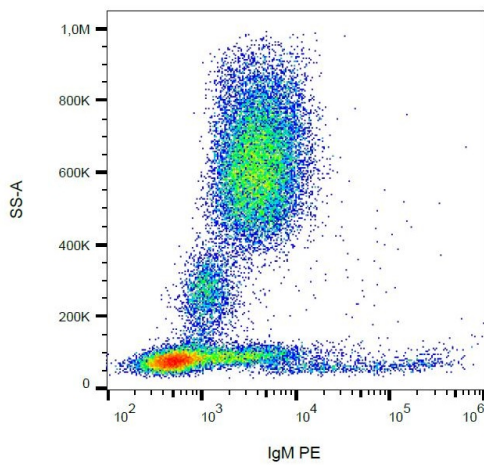


[View online »](#)

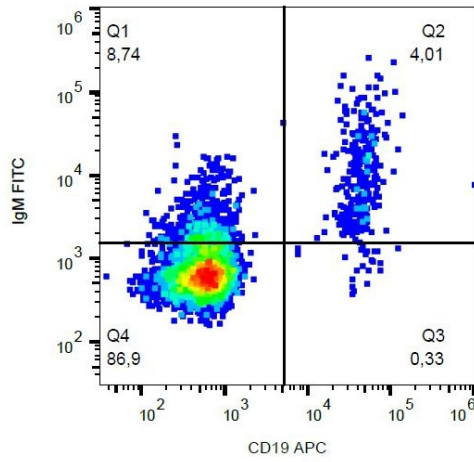
Product images:



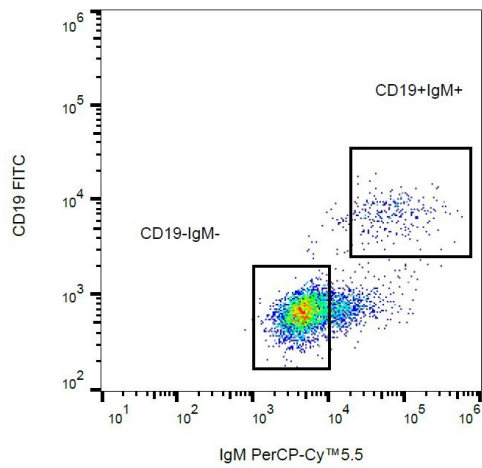
Surface staining of human peripheral blood cells with anti-human IgM (CH2) APC. Cells in the lymphocyte gate were used for analysis.



Surface staining of human peripheral blood cells with anti-human IgM (CH2) PE.



Surface staining of human peripheral blood cells with anti-human IgM (CH2) FITC.



Surface staining of human peripheral blood cells with anti-human IgM (CH2) PerCP-Cy5.5.