

Product datasheet for **SM3063HRP**

Human IgM (Fc specific) Mouse Monoclonal Antibody [Clone ID: CH2]

Product data:

Product Type:	Secondary Antibodies
Product Name:	Human IgM (Fc specific) Mouse Monoclonal Antibody [Clone ID: CH2]
Clone Name:	CH2
Applications:	E, WB
Recommended Dilution:	Western blot: Recommended dilution: 1 µg/ml.
Reactivity:	Human
Host:	Mouse
Immunogen:	Purified human IgM
Isotype:	IgG1
Formulation:	Phosphate buffered saline (PBS) solution containing 0.01% (w/v) thimerosal Label: HRP State: Liquid purified Ig fraction Label: Conjugated with Horseradish Peroxidase of high specific activity and RZ=3.
Concentration:	lot specific
Conjugation:	HRP
Storage:	Store the antibody at 2 - 8 °C. DO NOT FREEZE! This product is photosensitive and should be protected from light.



[View online »](#)

Product images:

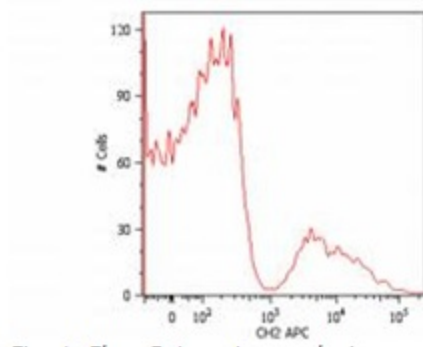
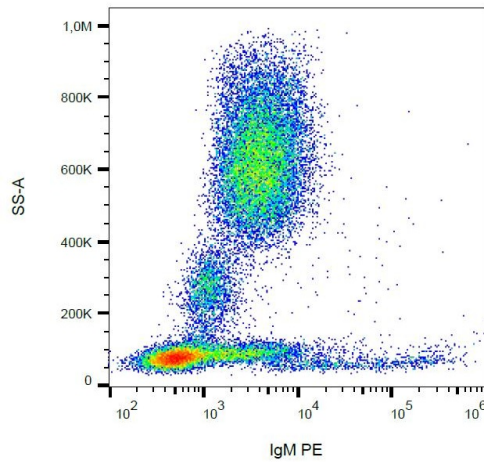
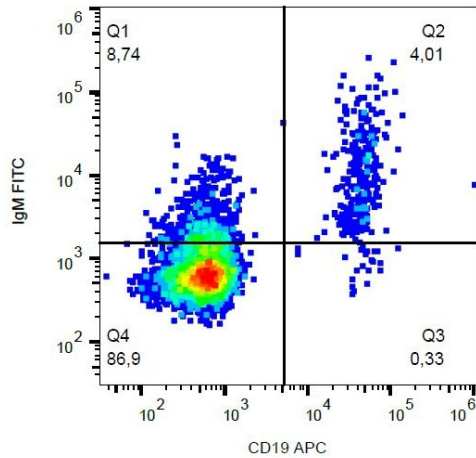


Fig. 1. Flow Cytometry analysis

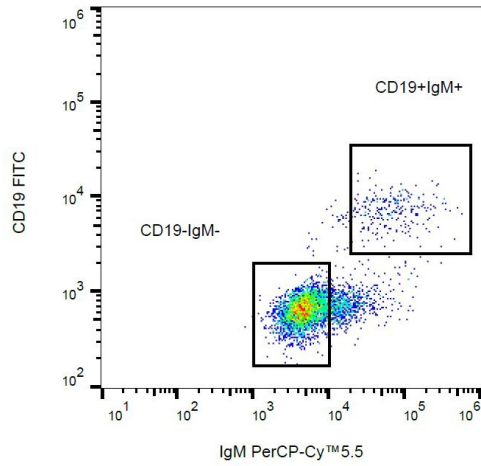
Surface staining of human peripheral blood cells with anti-human IgM (CH2) APC. Cells in the lymphocyte gate were used for analysis.



Surface staining of human peripheral blood cells with anti-human IgM (CH2) PE.



Surface staining of human peripheral blood cells with anti-human IgM (CH2) FITC.



Surface staining of human peripheral blood cells with anti-human IgM (CH2) PerCP-Cy5.5.