

Product datasheet for **SM3063APC**

Human IgM (Fc-region) Mouse Monoclonal Antibody [Clone ID: CH2]

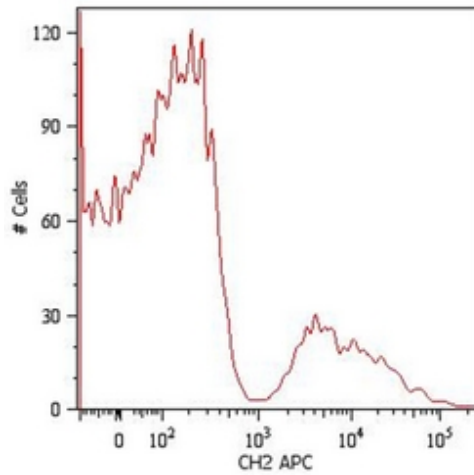
Product data:

Product Type:	Secondary Antibodies
Product Name:	Human IgM (Fc-region) Mouse Monoclonal Antibody [Clone ID: CH2]
Clone Name:	CH2
Applications:	FC
Recommended Dilution:	Flow Cytometry: 2 µg/ml is recommended starting point.
Reactivity:	Human
Host:	Mouse
Immunogen:	Purified Human IgM
Isotype:	IgG1
Formulation:	Phosphate buffered saline (PBS) solution containing 15mM sodium azide Label: APC State: Liquid purified Ig fraction Label: Conjugated with cross-linked Allophycocyanin (APC) under optimum conditions. The conjugate is purified by size-exclusion chromatography.
Concentration:	lot specific
Conjugation:	APC
Storage:	Store the antibody undiluted at 2-8 °C. DO NOT FREEZE! This product is photosensitive and should be protected from light. Should it contain a precipitate we recommend microcentrifugation before use.

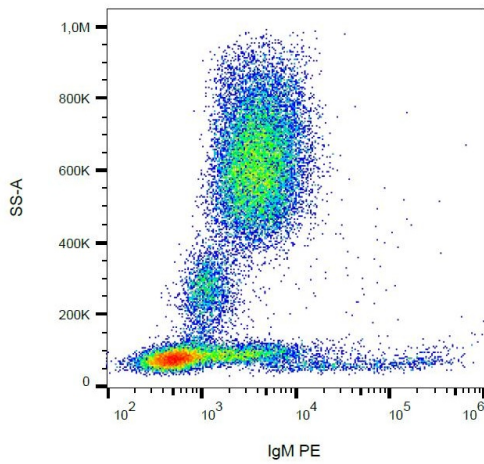


[View online »](#)

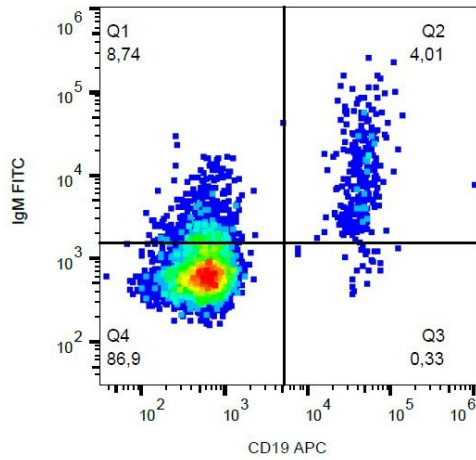
Product images:



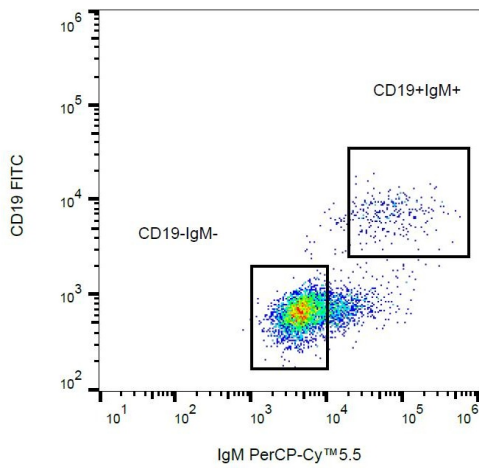
Surface staining of Human peripheral blood cells with anti-Human IgM Antibody (CH2) APC conjugated Cat.-No SM3063APC. Cells in the lymphocyte gate were used for analysis.



Surface staining of human peripheral blood cells with anti-human IgM (CH2) PE.



Surface staining of human peripheral blood cells with anti-human IgM (CH2) FITC.



Surface staining of human peripheral blood cells with anti-human IgM (CH2) PerCP-Cy5.5.