

## Product datasheet for **SM3061PE**

### Human IgE Mouse Monoclonal Antibody [Clone ID: BE5]

#### Product data:

Product Type:	Secondary Antibodies
Product Name:	Human IgE Mouse Monoclonal Antibody [Clone ID: BE5]
Clone Name:	BE5
Applications:	FC
Recommended Dilution:	<b>Flow cytometry:</b> 5 µg/ml.
Reactivity:	Human
Host:	Mouse
Immunogen:	Purified human IgE
Isotype:	IgG1
Formulation:	Phosphate buffered saline (PBS) containing 15 mM sodium azide and 0.2% (w/v) high-grade protease free Bovine Serum Albumin (BSA) as a stabilizing agent. Label: PE State: Liquid Ig fraction Label: Conjugated with R-Phycoerythrin under optimum conditions. The conjugate is purified by size-exclusion chromatography.
Concentration:	lot specific
Conjugation:	PE
Storage:	Store the antibody at 2 - 8 °C. DO NOT FREEZE! This product is photosensitive and should be protected from light.



[View online »](#)

Product images:

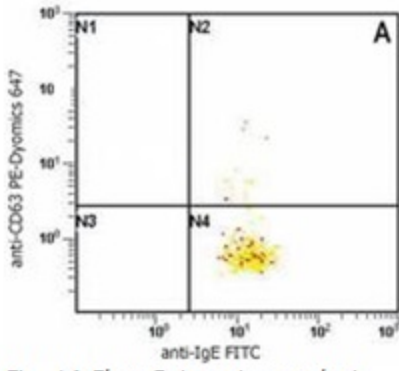


Fig. 1A Flow Cytometry analysis

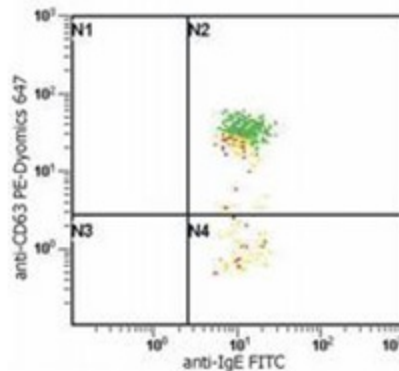
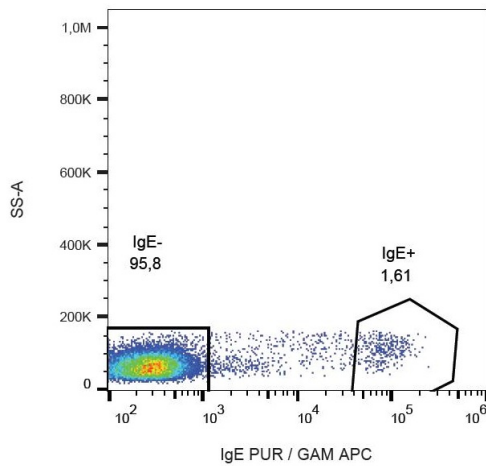


Fig. 1B Flow Cytometry analysis

Fig. 1. Flow Cytometry analysis of basophil activation upon stimulation of normal (heparin-treated) whole blood with combination of IL-3 and Goat anti-IgE polyclonal antibody. Combination of anti-human IgE (BE5) FITC and anti-human CD63 (MEM-259) PE-Dyomics 647 was used (analysis in basophil window). Fig. 1A - staining of non-stimulated (control) sample Fig. 1B - staining of IgE stimulated sample



Surface staining of IgE in human peripheral blood lymphocytes with anti-IgE (BE5) purified, GAM-APC.