

Product datasheet for **SM3061P**

Human IgE Mouse Monoclonal Antibody [Clone ID: BE5]

Product data:

Product Type:	Secondary Antibodies
Product Name:	Human IgE Mouse Monoclonal Antibody [Clone ID: BE5]
Clone Name:	BE5
Applications:	ELISA, FC
Recommended Dilution:	ELISA. Flow Cytometry: 5-10 µg/ml.
Reactivity:	Human
Host:	Mouse
Immunogen:	Purified human IgE
Isotype:	IgG1
Formulation:	Phosphate buffered saline (PBS) with 15 mM sodium azide, approx. pH 7.4 State: Purified State: Liquid Ig fraction
Concentration:	lot specific
Purification:	Precipitation methods and ion exchange chromatography; purity: > 95% (by SDS-PAGE)
Conjugation:	Unconjugated
Storage:	Store undiluted at 2-8°C. DO NOT FREEZE!



[View online »](#)

Product images:

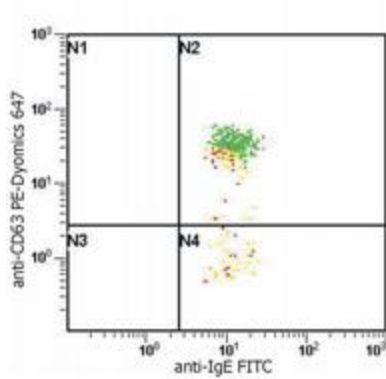
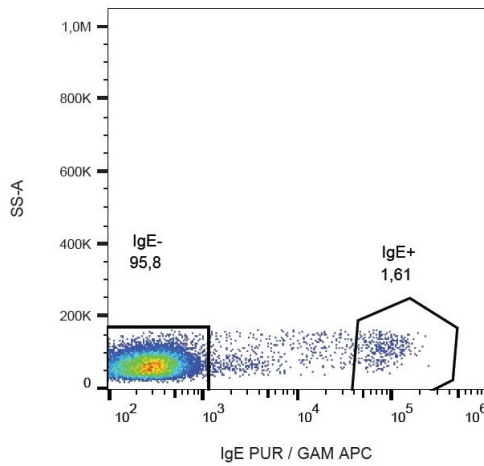
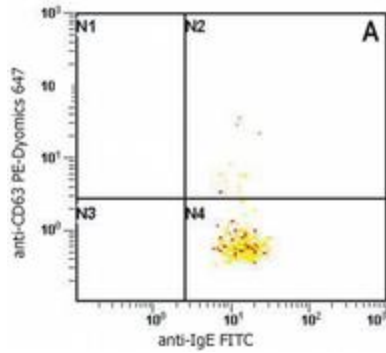


Figure 2: staining of IgE stimulated sample



Surface staining of IgE in human peripheral blood lymphocytes with anti-IgE (BE5) purified, GAM-APC.



Flow Cytometry analysis of basophil activation upon stimulation of normal (heparin-treated) whole blood with combination of IL-3 and Goat anti-IgE polyclonal antibody. Combination of anti-human IgE (BE5) FITC and anti-human CD63 (MEM-259) PE-Dyomics 647 ([SM3035P6]) was used (analysis in basophil window). **Figure 1:** staining of non-stimulated (control) sample.