

## Product datasheet for **SM3058P**

### Herpes simplex Virus 1 / HSV1 (+ HSV2) Glycoprotein B Mouse Monoclonal Antibody [Clone ID: T111]

#### Product data:

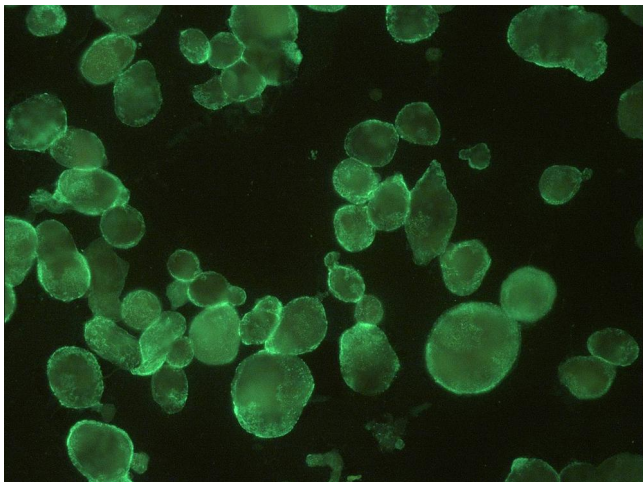
|                       |   |
|-----------------------|---|
| Product Type:         | Primary Antibodies  |
| Clone Name:           | T111  |
| Applications:         | ELISA, IF   |
| Recommended Dilution: | <b>Immunocytochemistry.</b><br><b>ELISA.</b>  |
| Reactivity:           | Human   |
| Host:                 | Mouse   |
| Isotype:              | IgG2b   |
| Clonality:            | Monoclonal  |
| Immunogen:            | Extract of HSV-1 infected VERO (green monkey kidney) cells  |
| Specificity:          | The antibody recognizes gB antigen of both HSV1 and HSV2 (Herpes Simplex Virus type 1 and 2), a dsDNA virus, member of Herpesviridae family.  |
| Formulation:          | PBS pH 7.4 containing 15 mM sodium azide as preservative<br>State: Purified<br>State: Liquid purified Ig fraction   |
| Concentration:        | lot specific  |
| Purification:         | Protein A affinity chromatography (>95% by SDS-PAGE)  |
| Conjugation:          | Unconjugated  |
| Storage:              | Store undiluted at 2-8°C.<br><b>DO NOT FREEZE!</b>  |
| Stability:            | Shelf life: one year from despatch.   |
| Background:           | Herpes Simplex Virus (HSV) is a virus that manifests itself in two common viral infections. There are actually two types of Herpes Simplex Virus, HSV1 and HSV2. These are very similar in many ways, and both can cause either oral herpes or genital herpes. HSV1 - most commonly develops into Oral Herpes infecting the lips (fever blisters or cold sores). HSV1 can also infect the genital area causing sores to develop. HSV2 - generally infects the genital area (Genital Herpes); however, HSV2 can also infect the mouth. |



[View online »](#)

Synonyms: HSV-1, HHV1, HHV-1, Human Herpes Virus 1

**Product images:**



Detection of HSV by monoclonal antibody T111 in infected cells.