

## Product datasheet for **SM3055P**

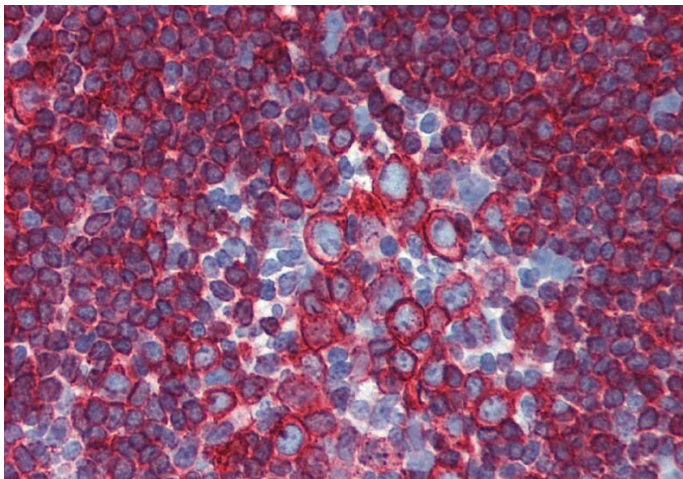
### HLA Class II DR + DP Mouse Monoclonal Antibody [Clone ID: HL-40]

#### Product data:

Product Type:	Primary Antibodies
Clone Name:	HL-40
Applications:	FC, IHC, IP
Recommended Dilution:	Flow cytometry: Recommended dilution: 1-5 µg/ml.
Reactivity:	Human, Porcine
Host:	Mouse
Isotype:	IgG2a
Clonality:	Monoclonal
Immunogen:	Raji Burkitt's lymphoma cell line
Specificity:	The antibody reacts with common epitope on beta-chain of Human HLA-DR and HLA-DP.
Formulation:	PBS, pH~7.4 State: Purified State: Liquid purified Ig fraction (> 95% pure by SDS-PAGE) Preservative: 15 mM Sodium Azide
Concentration:	lot specific
Purification:	Protein A Chromatography
Conjugation:	Unconjugated
Storage:	Store undiluted at 2-8°C. <b>DO NOT FREEZE!</b>
Stability:	Shelf life: one year from despatch.
Background:	DR and DP are the isotypes of human MHC Class II molecules expressed on antigen-presenting cells (APC; dendritic cells, B lymphocytes, monocytes, macrophages).
Synonyms:	HLA-DP, HLA-DR, HLA class II histocompatibility antigen DR, DP, MHC class II antigen DR, DP



[View online »](#)

**Product images:**

Immunohistochemistry staining of human small intestine (paraffin-embedded sections) with anti-HLA-DR+DP (HL-40).