

Product datasheet for **SM3054P**

HLA Class II DR + DP Mouse Monoclonal Antibody [Clone ID: HL-38]

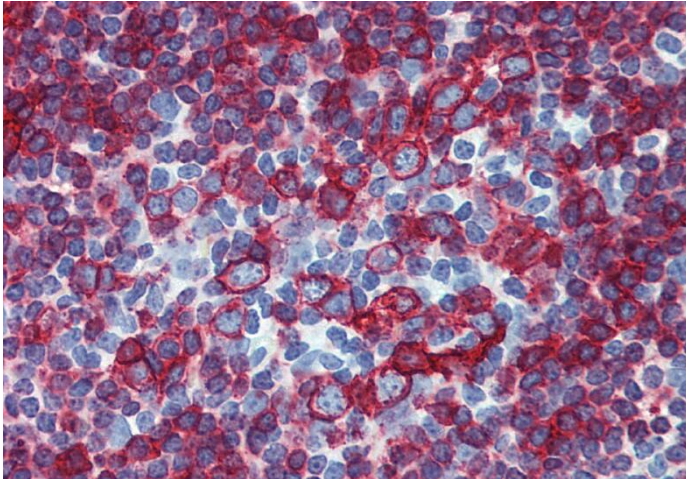
Product data:

Product Type:	Primary Antibodies
Clone Name:	HL-38
Applications:	FC, IHC, IP, WB
Recommended Dilution:	Flow Cytometry. Immunoprecipitation. Western Blotting under non reducing conditions.
Reactivity:	Human, Porcine
Host:	Mouse
Isotype:	IgG2a
Clonality:	Monoclonal
Immunogen:	Burkitt's lymphoma cell line Raji
Specificity:	The antibody recognizes common epitope on beta-chain of human HLA-DR and HLA-DP.
Formulation:	PBS with 15 mM sodium azide, approx. pH 7.4 State: Purified State: Liquid Ig fraction
Concentration:	lot specific
Purification:	Protein-A affinity chromatography; purity > 95 % (by SDS-PAGE)
Conjugation:	Unconjugated
Storage:	Store the antibody at 2-8°C for up to one month or at -20°C for longer. Avoid repeated freezing and thawing.
Stability:	Shelf life: one year from despatch.
Background:	DR and DP are the isotypes of human MHC Class II molecules expressed on antigen-presenting cells (APC; dendritic cells, B lymphocytes, monocytes, macrophages).
Synonyms:	HLA-DP, HLA-DR, HLA class II histocompatibility antigen DR, DP, MHC class II antigen DR, DP

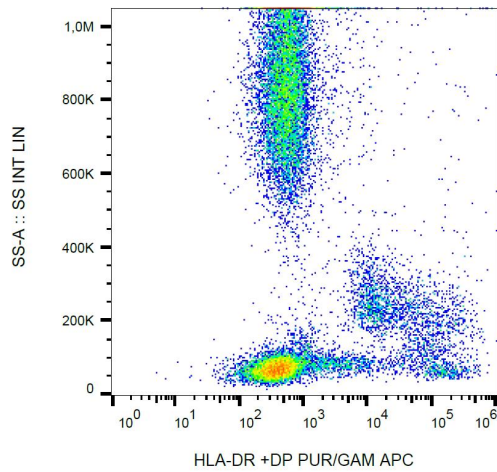


[View online »](#)

Product images:



Immunohistochemistry staining of human small intestine (paraffin-embedded sections) with anti-HLA-DR+DP (HL-38).



Surface staining of human peripheral blood with anti-HLA-DR+DP (HL-38) purified, GAM-APC.