

Product datasheet for **SM3053P**

HLAE (HLA-E) Mouse Monoclonal Antibody [Clone ID: MEM-E/02]

Product data:

Product Type:	Primary Antibodies
Clone Name:	MEM-E/02
Applications:	IHC, WB
Recommended Dilution:	Western blotting. Immunohistochemistry on Paraffin Sections: 5-10 µg/ml. Heat antigen retrieval (Sodium Citrate). <i>Positive Control:</i> Human placenta. <i>Incubation Time:</i> 1 hour at RT (detection DAB).
Reactivity:	Human, Primate
Host:	Mouse
Isotype:	IgG1
Clonality:	Monoclonal
Immunogen:	Recombinant Human HLA-E denatured heavy chain
Specificity:	The antibody specifically reacts with denatured heavy chain of Human HLA-E.
Formulation:	Phosphate buffered saline (PBS), pH~7.4 with 15 mM Sodium Azide as preservative. State: Purified State: Liquid purified Ig fraction (> 95% pure by SDS-PAGE).
Concentration:	lot specific
Purification:	Affinity Chromatography on Protein-A.
Conjugation:	Unconjugated
Storage:	Store the antibody undiluted at 2-8°C for one month or (in aliquots) at -20°C for longer. Avoid repeated freezing and thawing.
Stability:	Shelf life: one year from despatch.
Gene Name:	major histocompatibility complex, class I, E
Database Link:	Entrez Gene 3133 Human P13747

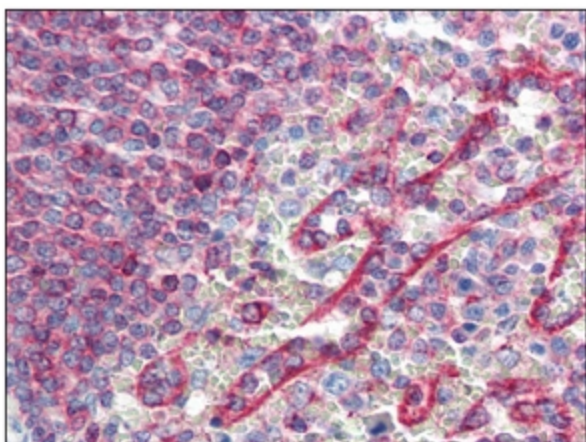


[View online »](#)

Background: HLA-E belongs to the MHC Class I molecules (MHC Class Ib; nonclassical) and it is expressed on the surface of all human cell types. This class I molecule is a heterodimer consisting of a heavy chain and a light chain (beta-2 microglobulin). The heavy chain is anchored in the membrane. HLA E binds a restricted subset of peptides derived from the leader peptides of other class I molecules.

Synonyms: HLA-6.2, HLAE, MHC class I antigen E

Product images:



Immunohistochemistry: HLA-E antibody staining of Formalin-Fixed, Paraffin-Embedded Human Spleen at 10 ug/ml followed by biotinylated anti-mouse IgG secondary antibody, alkaline phosphatase-streptavidin and chromogen.